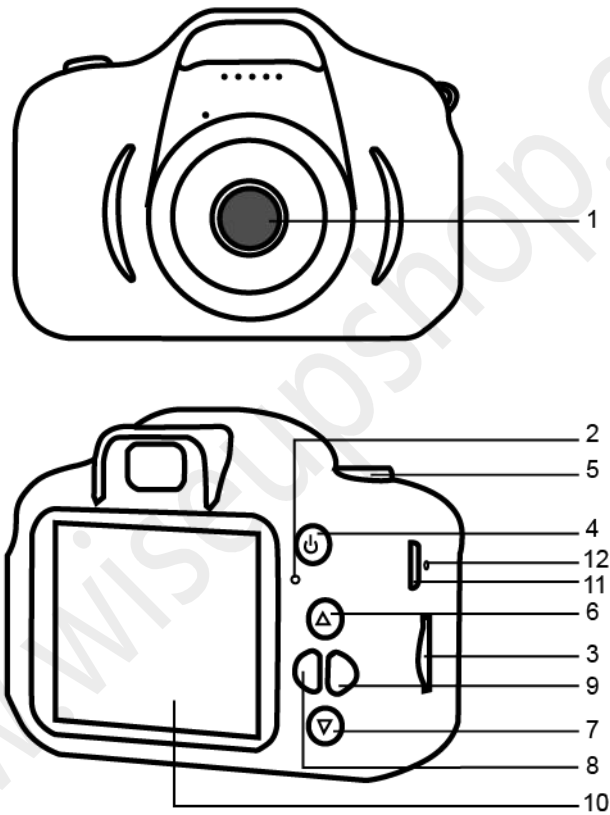


User Manual

Model Number: DV-10

I. Product Overview



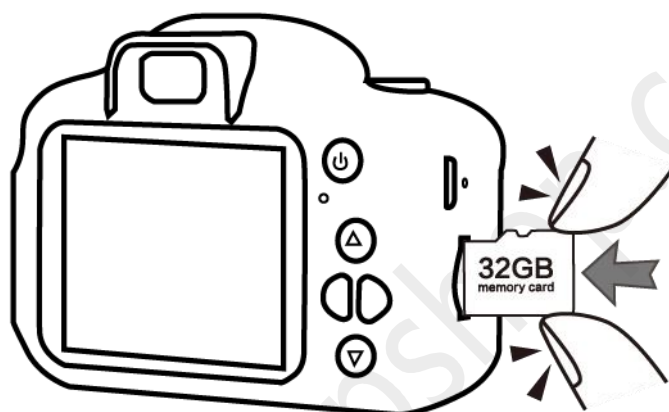
- | | |
|-------------------------|----------------------|
| 1. Camera Lens | 7. Down |
| 2. Indicator Light | 8. Setting/Backwards |
| 3. Micro SD card slot | 9. Album/Forwards |
| 4. On/Off/Return/Exit | 10. LCD Screen |
| 5. Photo/Record/Confirm | 11. USB Port |
| 6. Up | 12. Reset Button |

II. What's in the box?

- 1× Mini DV
- 1x USB cable

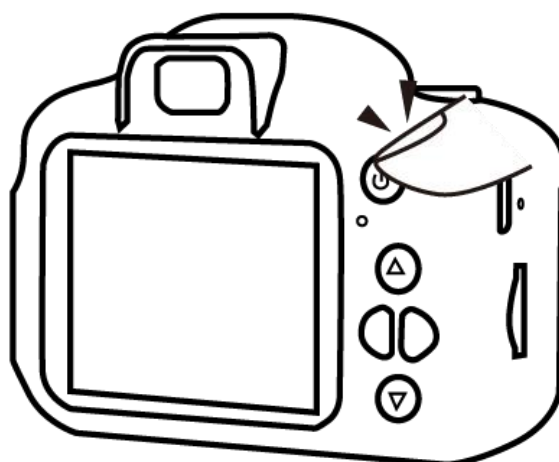
III. Get the camera ready

3.1 Insert a memory card into this camera, the memory card capacity should not over 32GB in max.

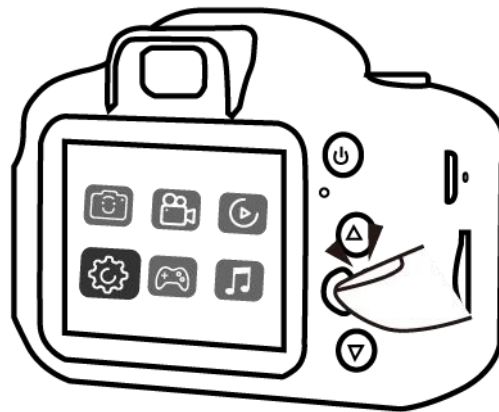


IV. Set the camera

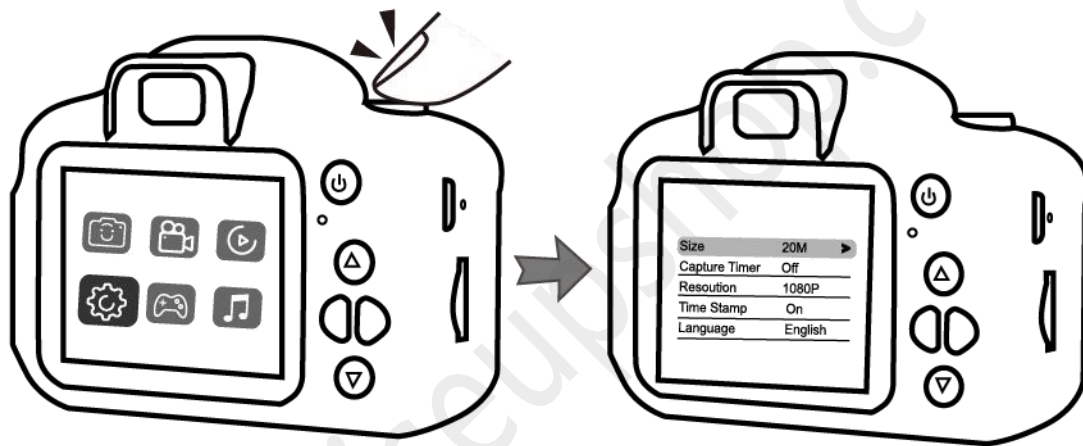
4.1 Hold down the "On/Off" button for 2 seconds to turn on the camera.



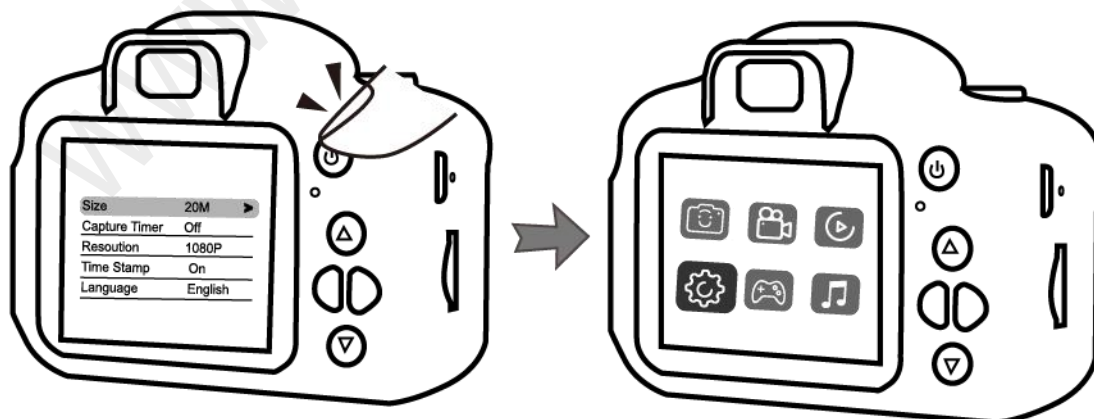
4.2 Select “setting”.



4.3 Press the “confirm” button to enter the camera setting.

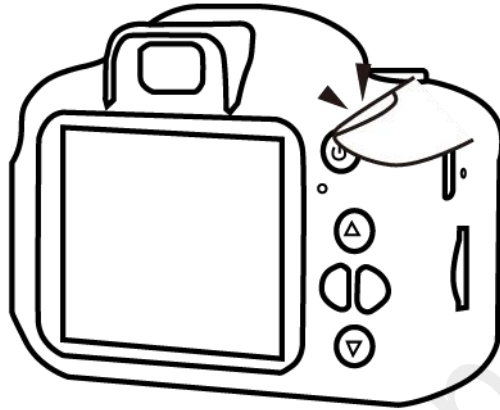


4.4 Press the “Exit” button to Exit the camera setting.



V. Delete photos or video files

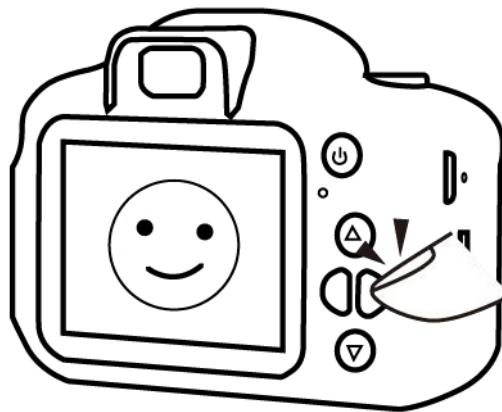
5.1 Hold down the “On/Off” button for 2 seconds to turn on the camera.



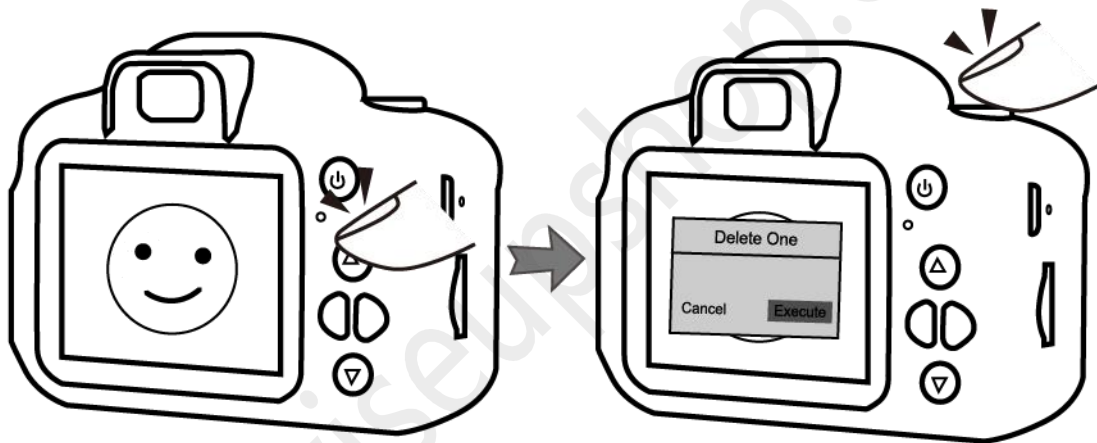
5.2 Select “playback” by pressing “forwards button”, then press “confirm” button.



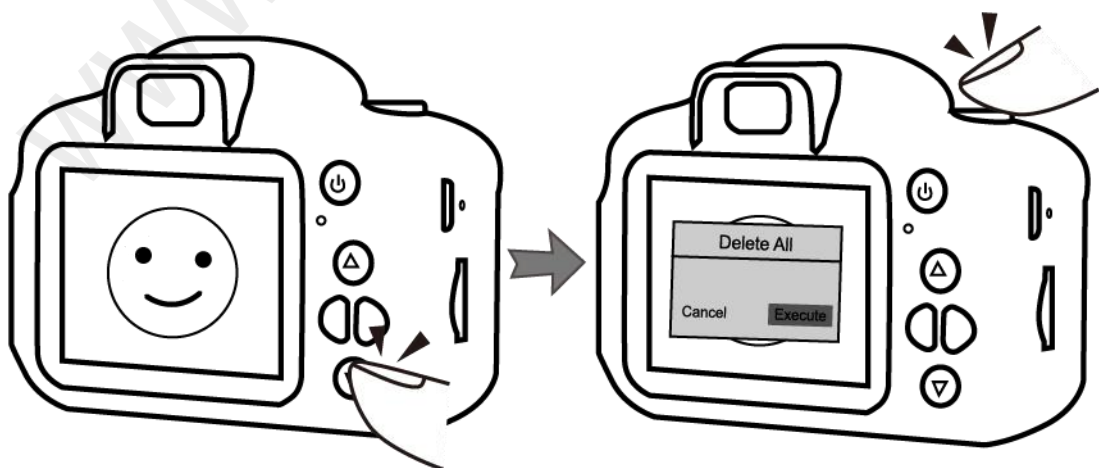
5.3 Choose one photo or video by pressing “forwards” or “backwards” button.



5.4 Press “up” button, choose “execute”, then press “confirm” button to delete the selected photo or video file.

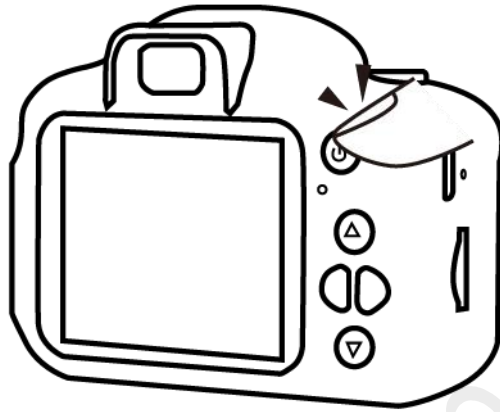


5.5 Press “down” button, choose “execute”, then press “confirm” button to delete all the photos or video files in the memory.



VI. Photographing

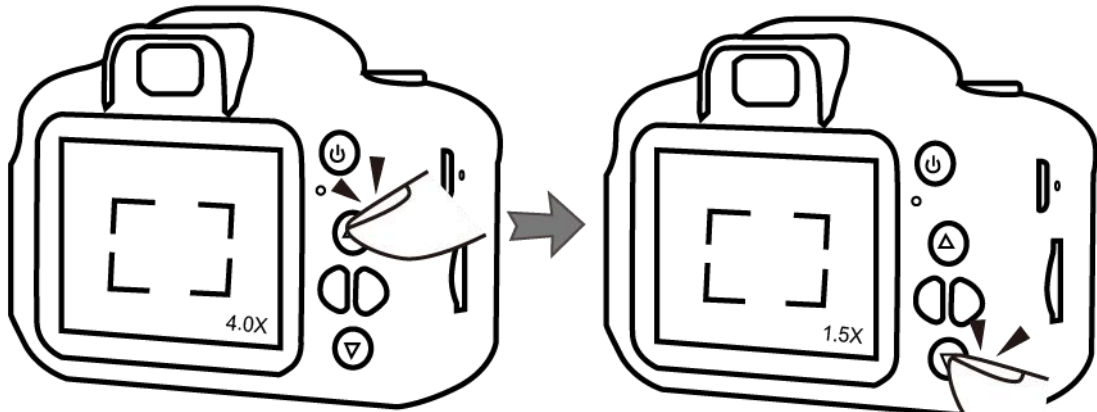
6.1 Hold down the “On/Off” button for 2 seconds to turn on the camera.



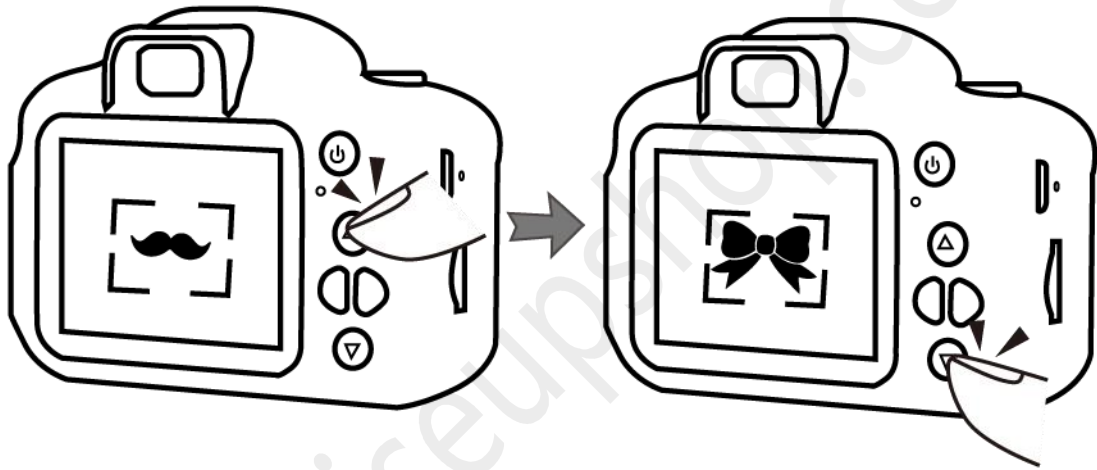
6.2 Select “Photographing” by pressing “forwards” or “backwards” button, then press “confirm” button to enter into photographing mode.



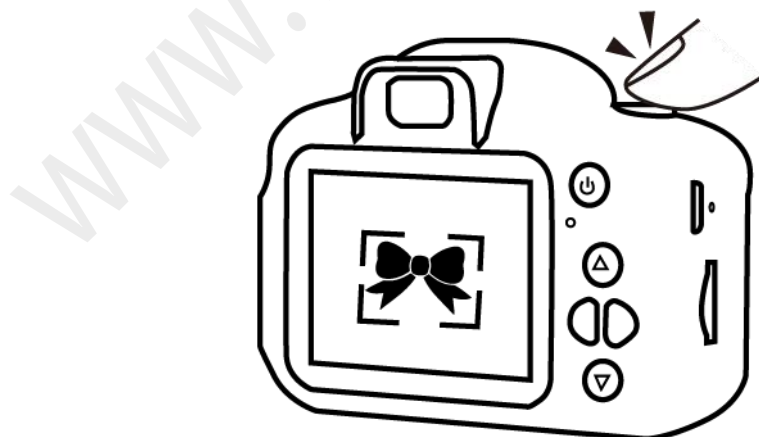
6.3 Hold down the “up” or “down” button to zoom in or zoom out.



6.4 Press the “up” or “down” button to select an image filter or photo sticker.

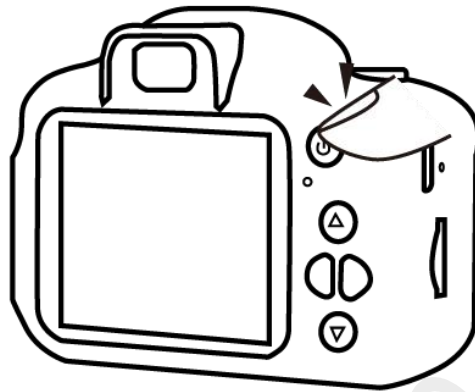


6.5 Press “photo” button to take a photo.



VII. Record video

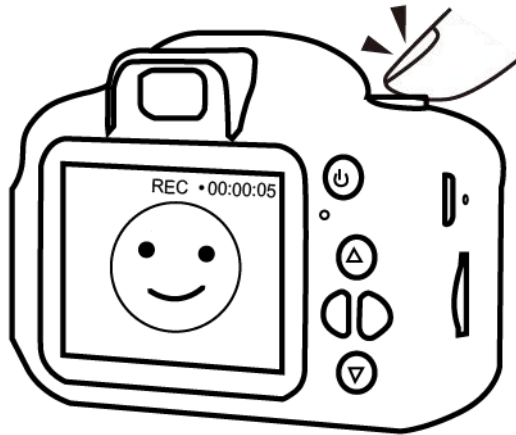
7.1 Hold down the “On/Off” button for 2 seconds to turn on the camera.



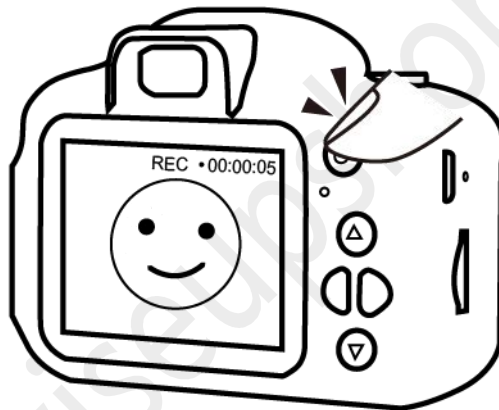
7.2 Select “video recording” by pressing “forwards” or “backwards” button, then press “confirm” button to enter into video recording mode.



7.3 Press “record” button to start video recording.



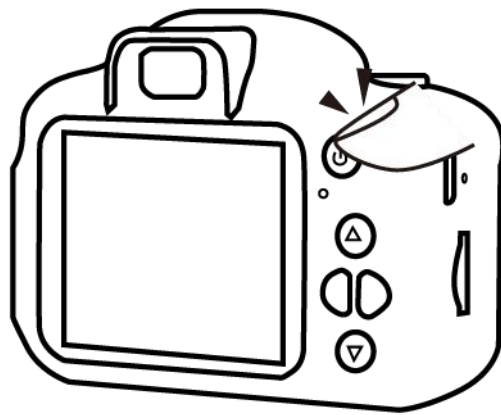
7.4 Press "Exit" button to stop video recording.



Notes: each video clip will be generated and saved automatically every 3 minutes.

VIII. Playback

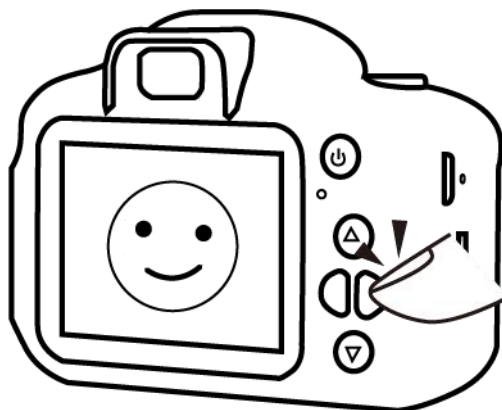
8.1 Hold down the "On/Off" button for 2 seconds to turn on the camera.



8.2 Select “playback” by pressing “backwards” or “forwards” button, then press “confirm” button.

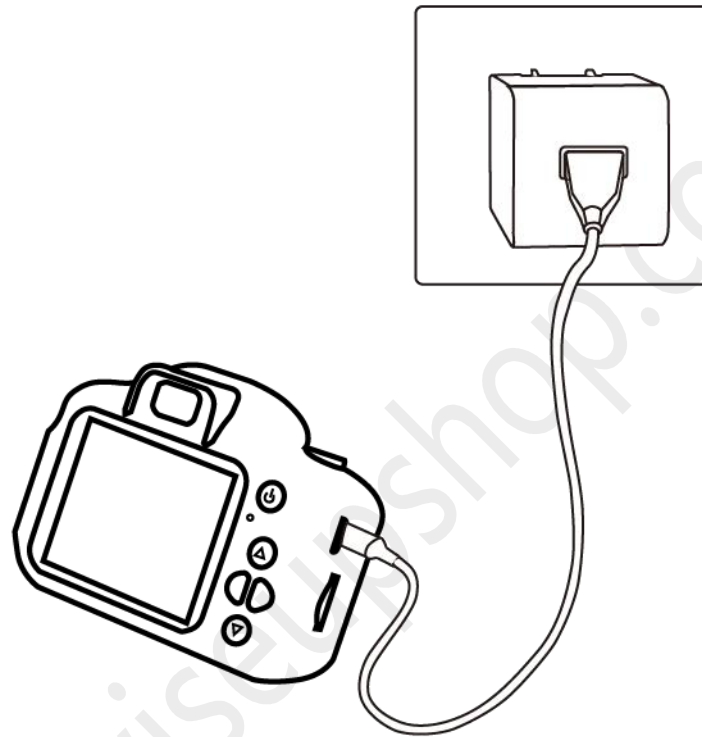


8.3 Press “forwards” or “backwards” button to browse photos and video files.



IX.Recharge

Plug this camera onto an external power socket with the USB cable and DC5V 1A USB charger to start charging.

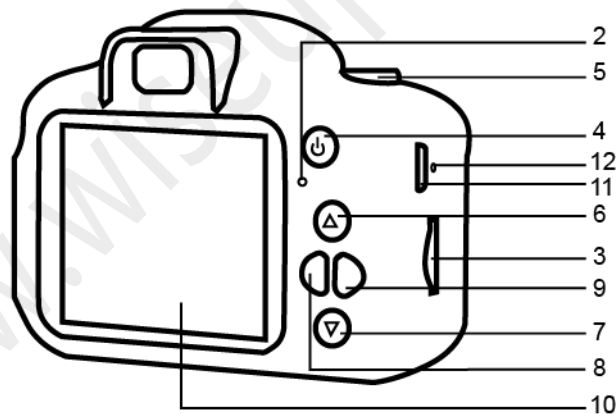
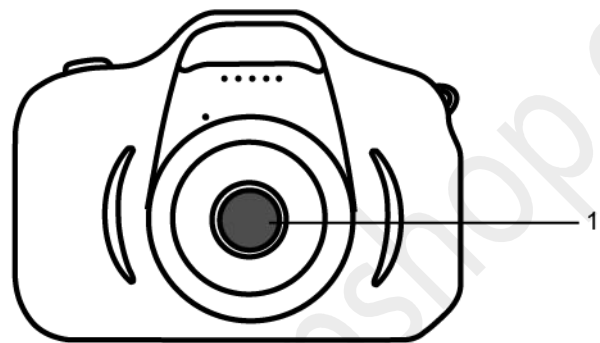


Notes: the battery could be fully charged in 40 minutes, you can check the charging status by pressing the “on/off” button.

Benutzerhandbuch

Modellnummer: DV-10

I. Produktübersicht



- | | |
|------------------------------|--------------------------|
| 1. Kameraobjektiv | 7. Unten |
| 2. Kontrollleuchte | 8. Einstellung/Rückwärts |
| 3. Micro-SD-Kartensteckplatz | 9. Album/Weiterleitungen |
| 4. Ein/Aus/Zurück/Beenden | 10. LCD-Bildschirm |
| 5. Foto/Aufnahme/Bestätigen | 11. USB-Anschluss |
| 6. Auf | 12. Reset-Taste |

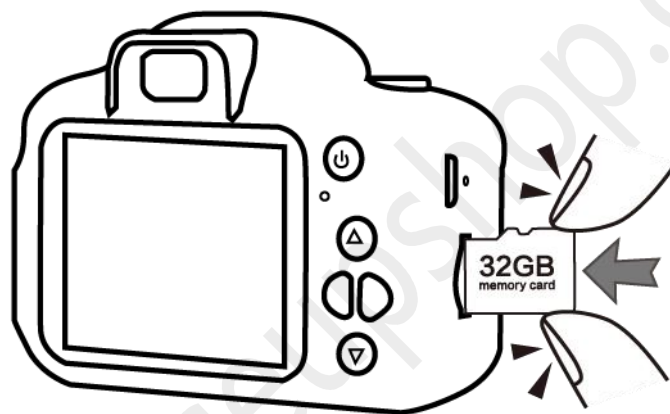
II. Was ist in der Box?

-1x Mini-DV

-1x USB-Kabel

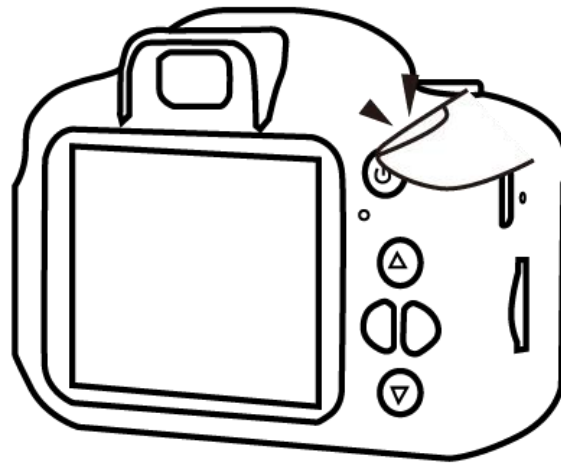
III. Halten Sie die Kamera bereit

3.1 Setzen Sie eine Speicherkarte in diese Kamera ein, die Kapazität der Speicherkarte sollte maximal 32GB betragen.

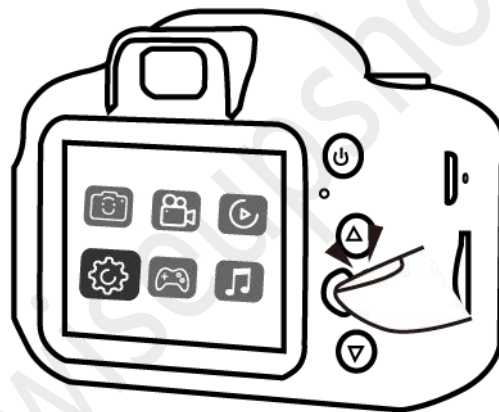


IV. Stellen Sie die Kamera ein

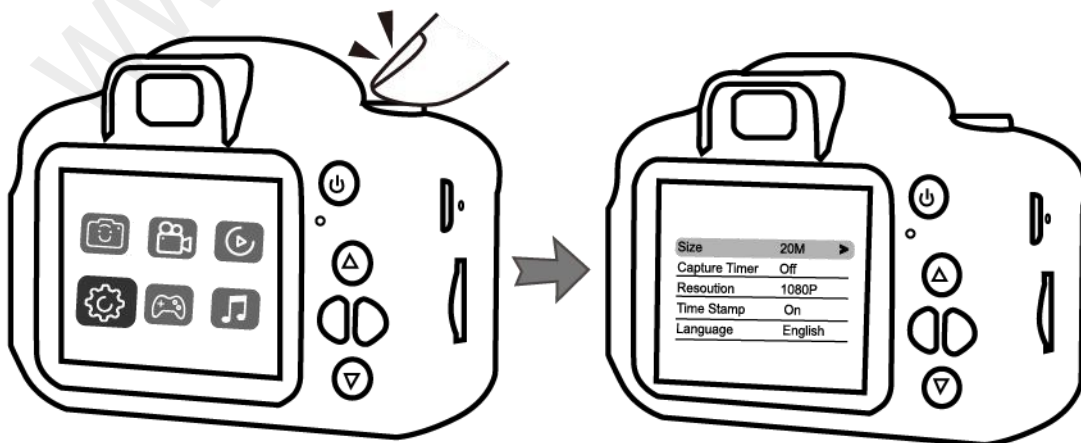
4.1 Halten Sie die "Ein/Aus"-Taste 2 Sekunden lang gedrückt, um die Kamera einzuschalten.



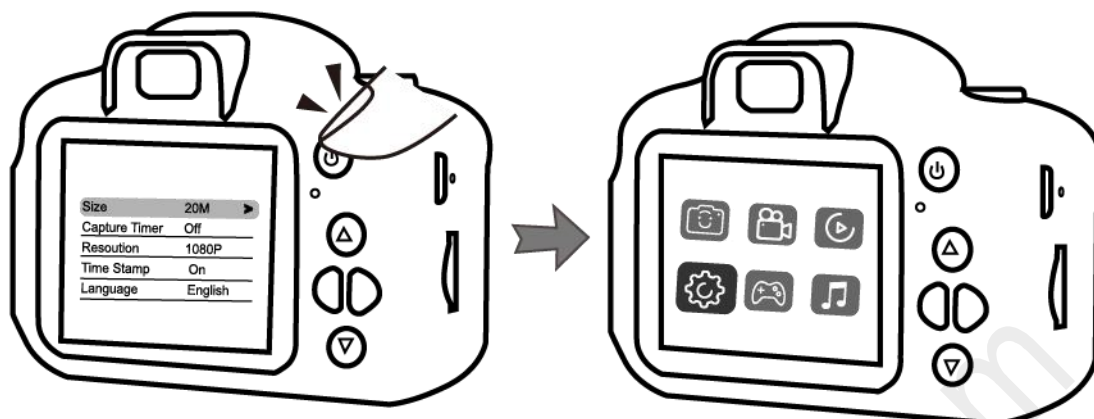
4.2 Wählen Sie "Einstellung".



4.3 Drücken Sie die "Bestätigen"-Taste, um die Kameraeinstellungen aufzurufen.



4.4 Drücken Sie die "Exit"-Taste, um die Kameraeinstellung zu verlassen.



V. Fotos oder Videodateien löschen

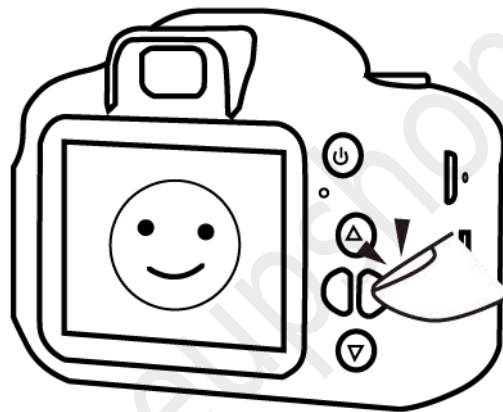
5.1 Halten Sie die "Ein/Aus"-Taste 2 Sekunden lang gedrückt, um die Kamera einzuschalten.



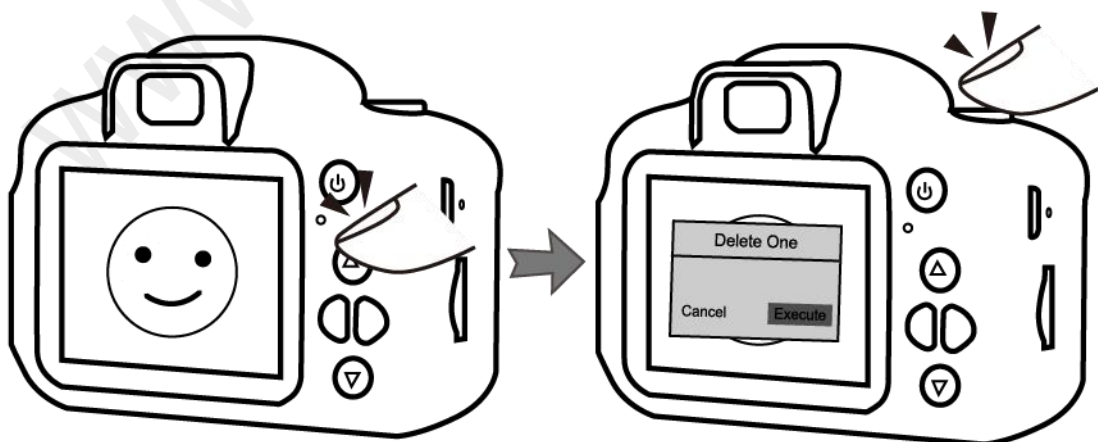
5.2 Wählen Sie "Wiedergabe" durch Drücken der "Vorwärts"-Taste und drücken Sie dann die "Bestätigen"-Taste.



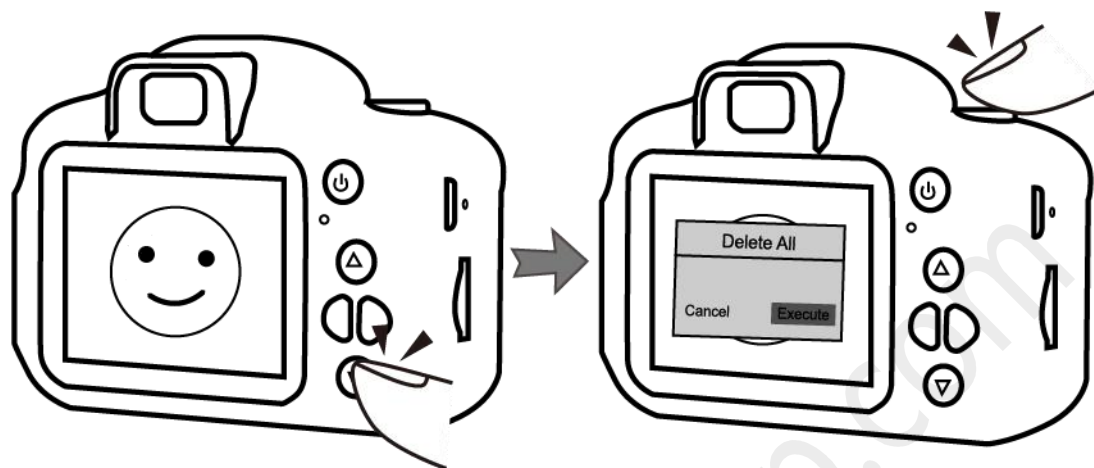
5.3 Wählen Sie ein Foto oder Video aus, indem Sie die Schaltfläche "Vorwärts" oder "Zurück" drücken.



5.4 Drücken Sie die "Aufwärts"-Taste, wählen Sie "Ausführen" und drücken Sie dann die "Bestätigen"-Taste, um die ausgewählte Foto- oder Videodatei zu löschen.



5.6 Drücken Sie die "Abwärts"-Taste, wählen Sie "Ausführen" und drücken Sie dann die "Bestätigen"-Taste, um alle Fotos oder Videodateien im Speicher zu löschen.



VI. Fotografieren

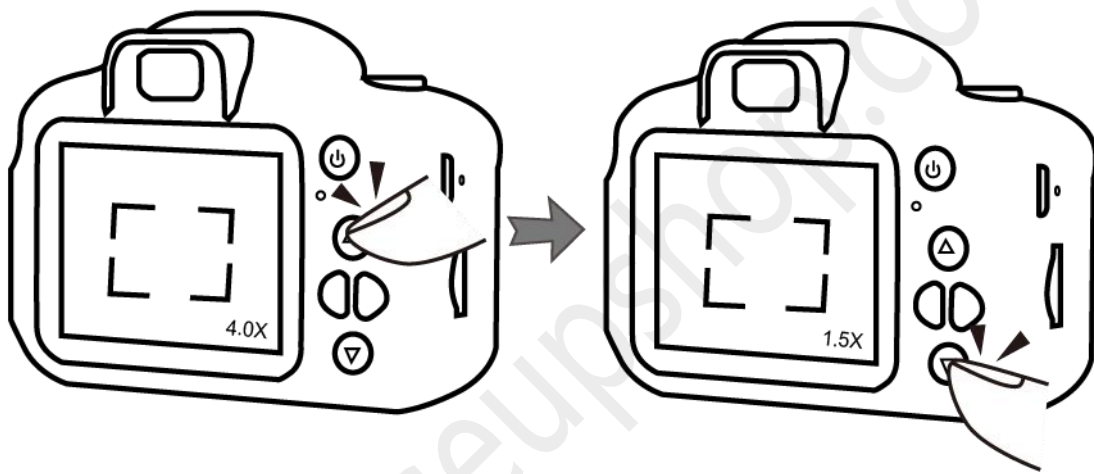
6.1 Halten Sie die "Ein/Aus"-Taste 2 Sekunden lang gedrückt, um die Kamera einzuschalten.



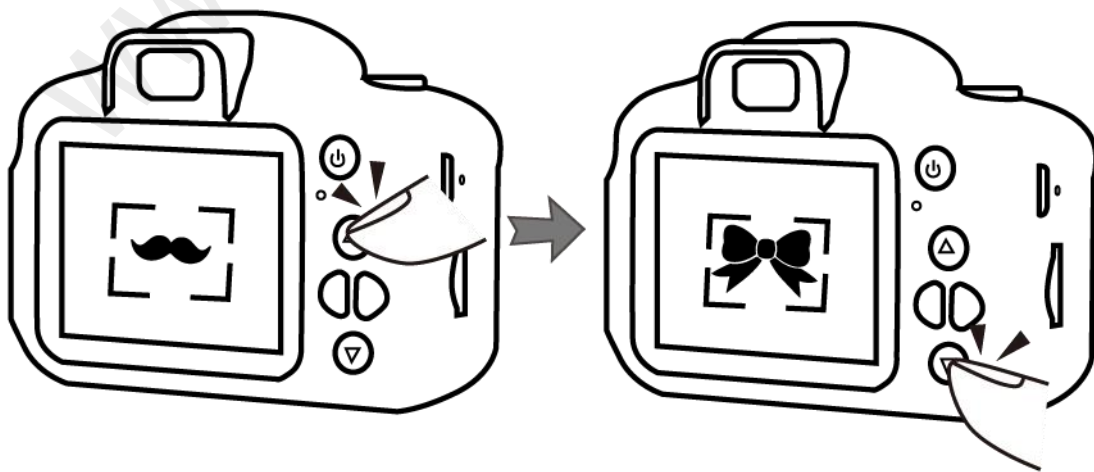
6.2 Wählen Sie "Fotografieren", indem Sie die "Vorwärts"- oder "Rückwärts"-Taste drücken, und drücken Sie dann die "Bestätigen"-Taste, um in den Aufnahmemodus zu gelangen.



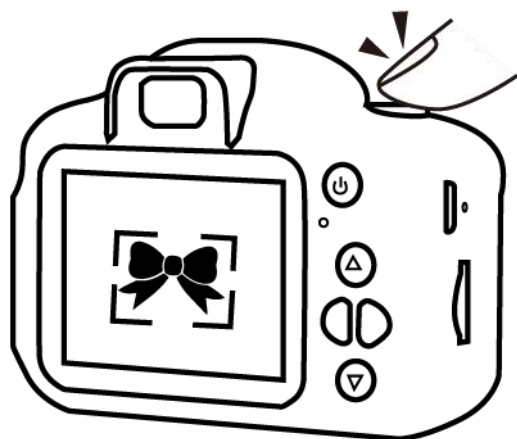
6.3 Halten Sie die "Auf"- oder "Ab"-Taste gedrückt, um zu vergrößern oder zu verkleinern.



6.4 Drücken Sie die "Aufwärts"- oder "Abwärts"-Taste, um einen Bildfilter oder Fotosticker auszuwählen.



6.5 Drücken Sie die "Foto"-Taste, um ein Foto aufzunehmen.



VII. Ein Video aufnehmen

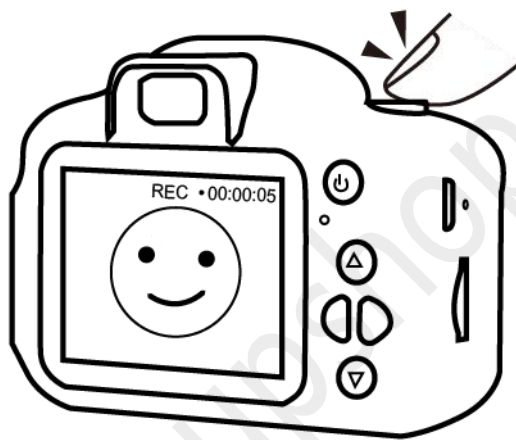
7.1 Halten Sie die "Ein/Aus"-Taste 2 Sekunden lang gedrückt, um die Kamera einzuschalten.



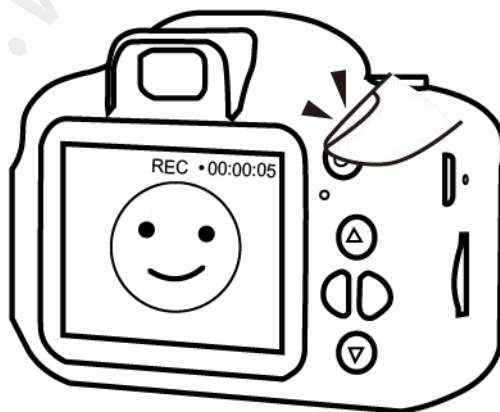
7.2 Wählen Sie "Videoaufnahme", indem Sie die "Vorwärts"- oder "Rückwärts"-Taste drücken, und drücken Sie dann die "Bestätigen"-Taste, um in den Videoaufnahmemodus zu gelangen.



7.3 Drücken Sie die "Aufnahme"-Taste, um die Videoaufnahme zu starten.



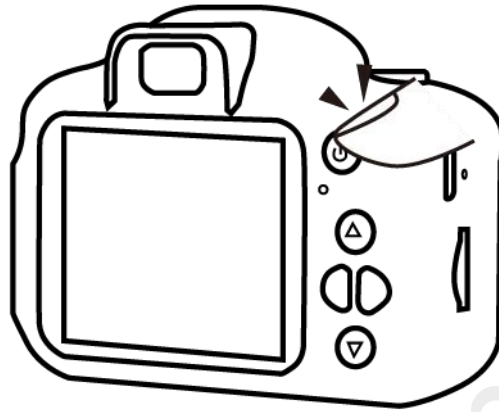
7.4 Drücken Sie die "Exit"-Taste, um die Videoaufnahme zu beenden.



Hinweise: Jeder Videoclip wird automatisch alle 3 Minuten generiert und gespeichert.

VIII. Wiedergabe

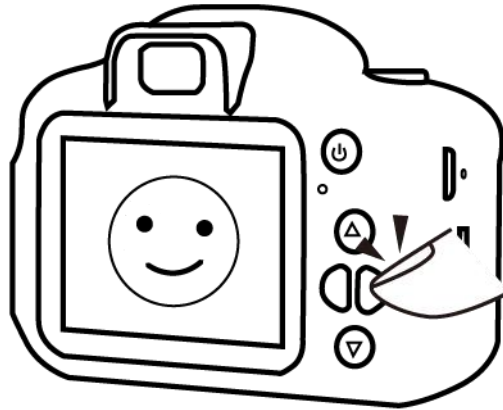
8.1 Halten Sie die "Ein/Aus"-Taste 2 Sekunden lang gedrückt, um die Kamera einzuschalten.



8.2 Wählen Sie "Wiedergabe", indem Sie die "Rückwärts"- oder "Vorwärts"-Taste drücken, und drücken Sie dann die "Bestätigen"-Taste.

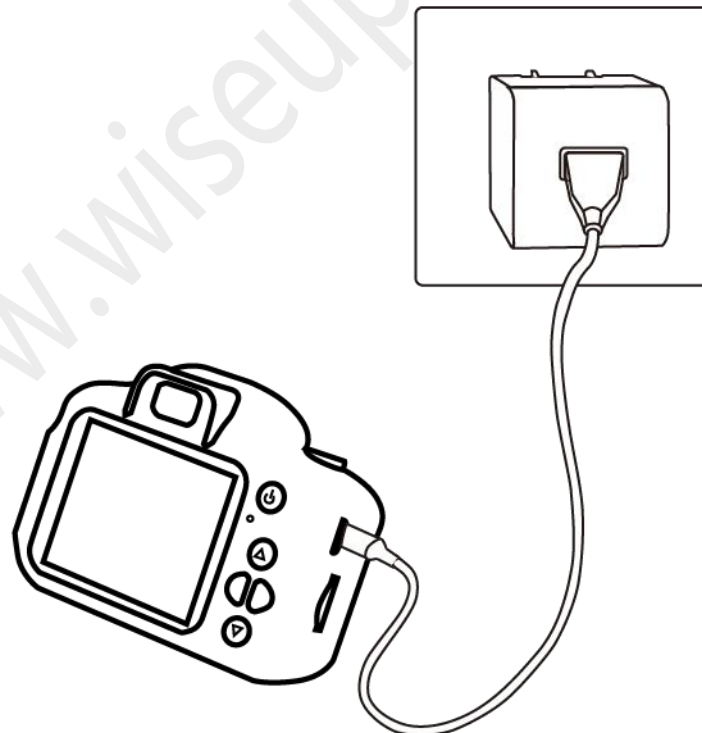


8.3 Drücken Sie die "Vorwärts"- oder "Rückwärts"-Taste, um Fotos und Videodateien zu durchsuchen.



IX. Aufladen

Schließen Sie diese Kamera mit dem USB-Kabel und dem DC5V 1A USB-Ladegerät an eine externe Steckdose an, um den Ladevorgang zu starten.

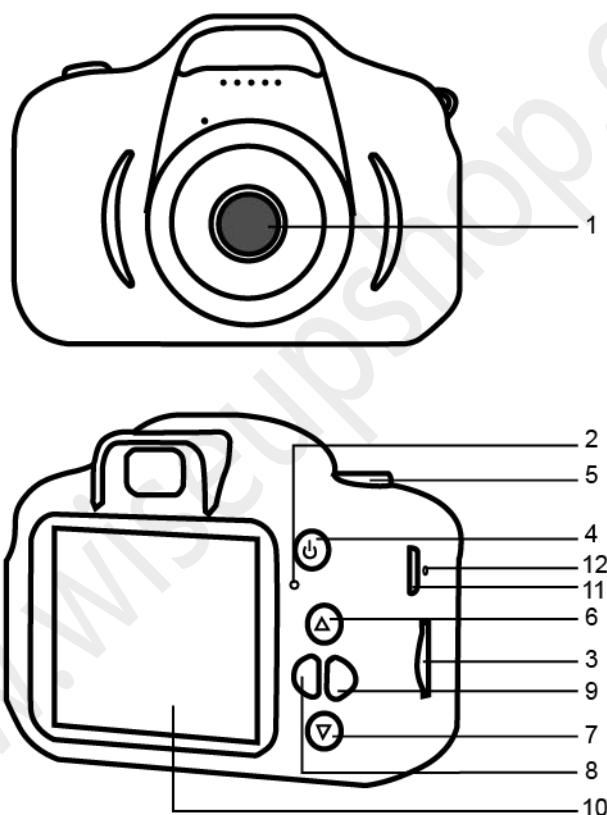


Hinweise: Der Akku kann in 40 Minuten vollständig aufgeladen werden, Sie können den Ladestatus überprüfen, indem Sie die "Ein/Aus"-Taste drücken.

Manuel de l'Utilisateur

Numéro de modèle: DV-10

I. Présentation du produit



1. Objectif de la caméra

2. Voyant lumineux

3. Fente pour carte micro SD

4. Marche/Arrêt/Retour/Sortie

5. Photo/Enregistrer/Confirmer

6. Haut

7. Bas

8. Réglage/Recul

9. Album/Avant

10. Écran ACL

11. Prise USB

12. Bouton de réinitialisation

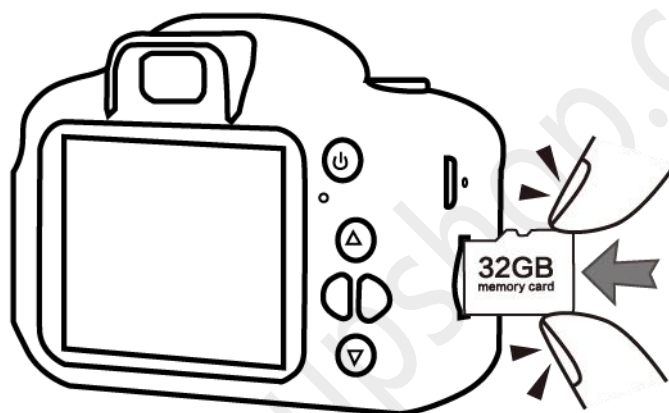
II. Qu'y a-t-il dans la boîte?

-1x Mini DV

-1x Câble USB

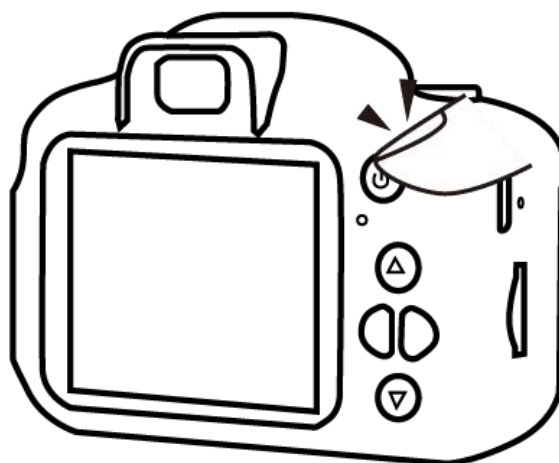
III. Préparez l'camera

3.1 Insérez une carte mémoire dans cet camera, la capacité de la carte mémoire ne doit pas dépasser 32Go au maximum.

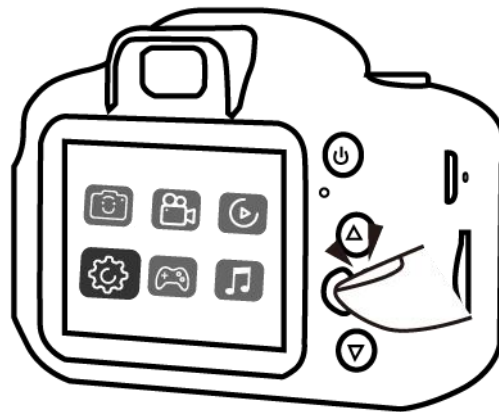


IV. Réglez la caméra

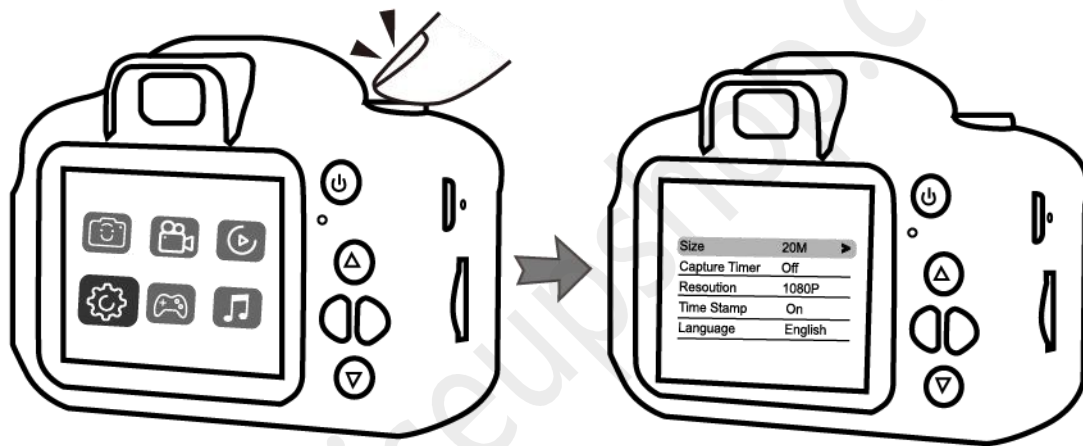
4.1 Maintenez enfoncé le bouton "Marche/Arrêt" pendant 2 secondes pour allumer l'camera.



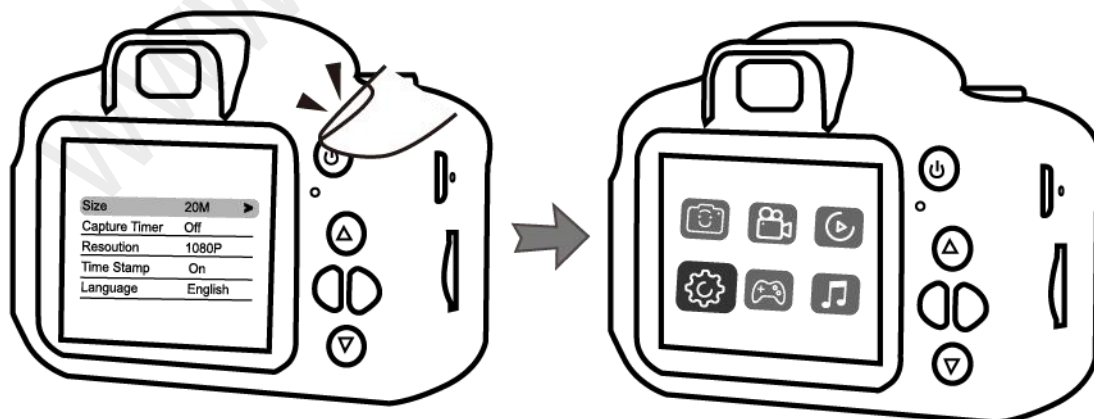
4.2 Sélectionnez "réglage".



4.3 Appuyez sur le bouton "confirmer" pour entrer dans le réglage de la caméra.

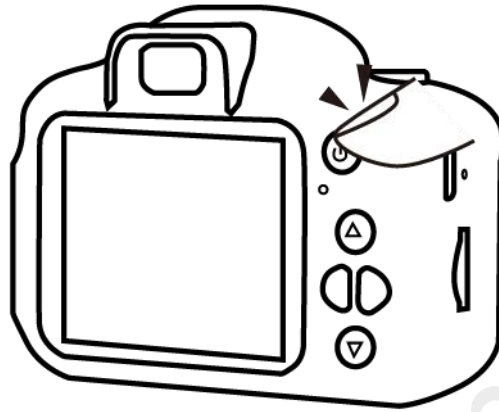


4.4 Appuyez sur le bouton "sortie" pour quitter le réglage de la caméra.



V. Supprimer des photos ou des fichiers vidéo

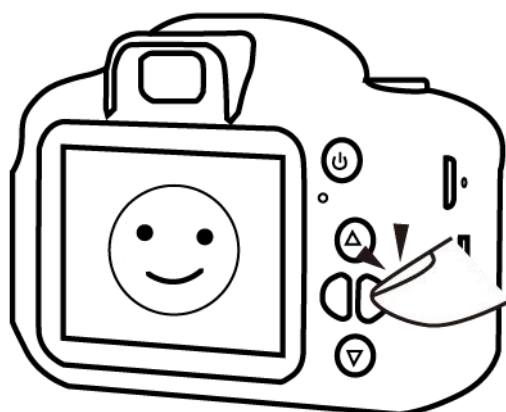
5.1 Maintenez enfoncé le bouton "Marche/Arrêt" pendant 2 secondes pour allumer l'camera.



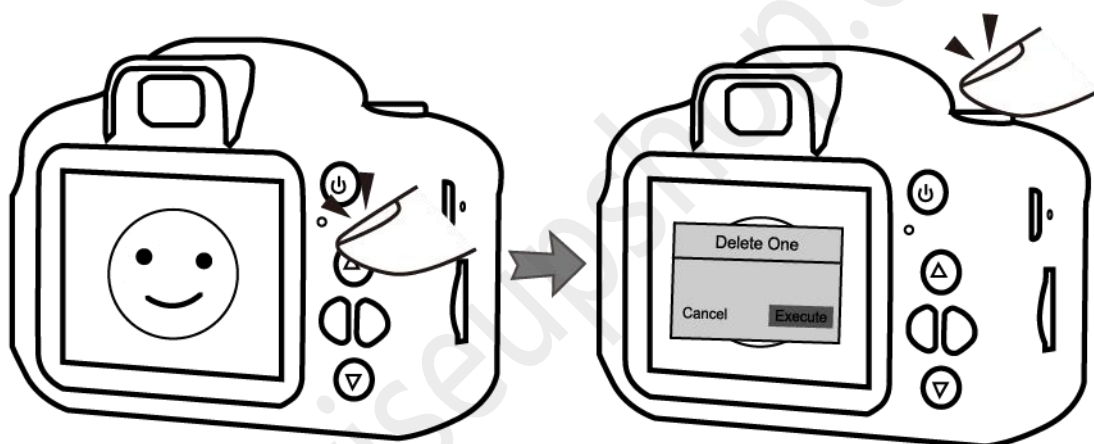
5.2 Sélectionnez "lecture" en appuyant sur le bouton "avant", puis appuyez sur le bouton "confirmer".



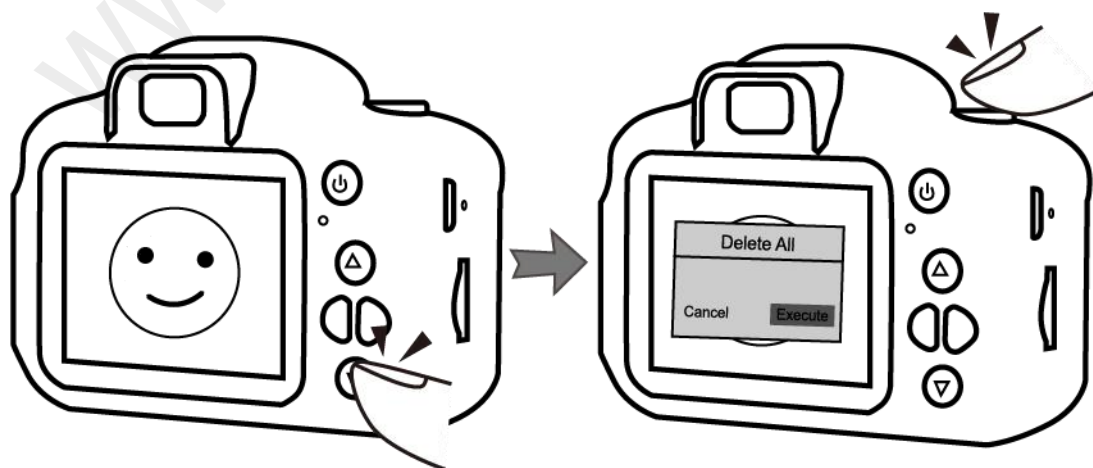
5.3 Choisissez une photo ou une vidéo en appuyant sur le bouton "avant" ou "arrière".



5.4 Appuyez sur le bouton "haut", choisissez "exécuter", puis appuyez sur le bouton "confirmer" pour supprimer la photo ou le fichier vidéo sélectionné.

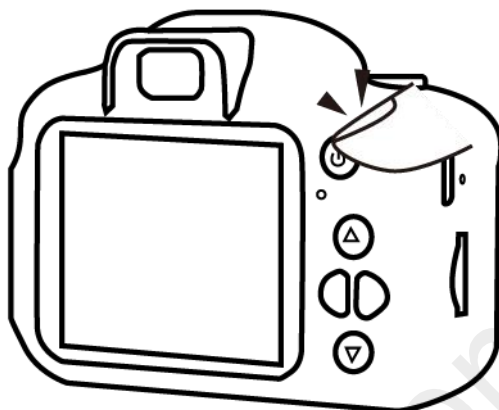


5.5 Appuyez sur le bouton "bas", choisissez "exécuter", puis appuyez sur le bouton "confirmer" pour supprimer toutes les photos ou fichiers vidéo de la mémoire.



VI. Photographier

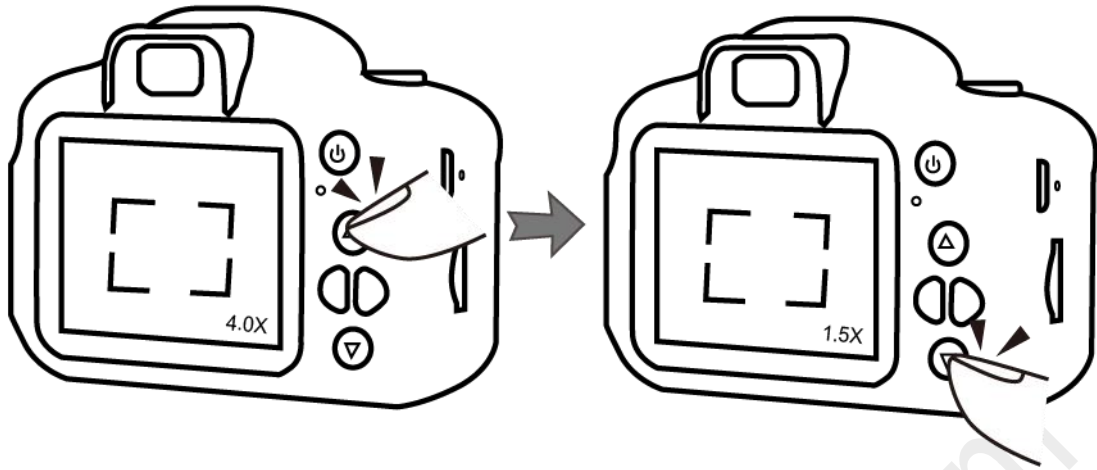
6.1 Maintenez enfoncé le bouton "Marche/Arrêt" pendant 2 secondes pour allumer l'camera.



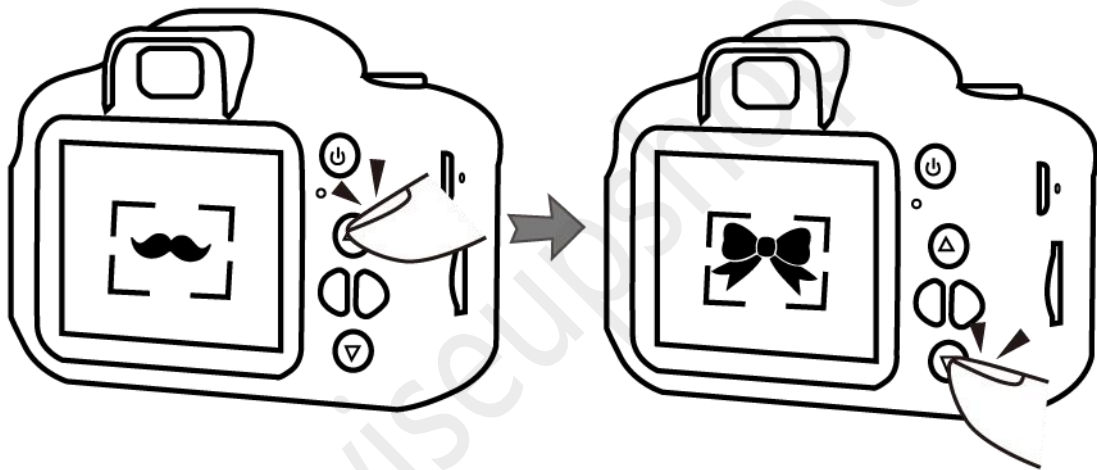
6.2 Sélectionnez "Photographier" en appuyant sur le bouton "avant" ou "arrière", puis appuyez sur le bouton "confirmer" pour entrer en mode photographie.



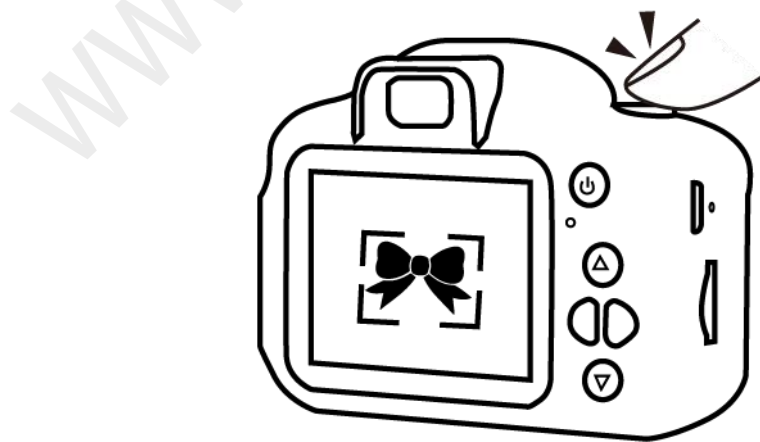
6.3 Maintenez enfoncé le bouton "haut" ou "bas" pour effectuer un zoom avant ou un zoom arrière.



6.4 Appuyez sur le bouton "haut" ou "bas" pour sélectionner un filtre d'image ou un autocollant photo.

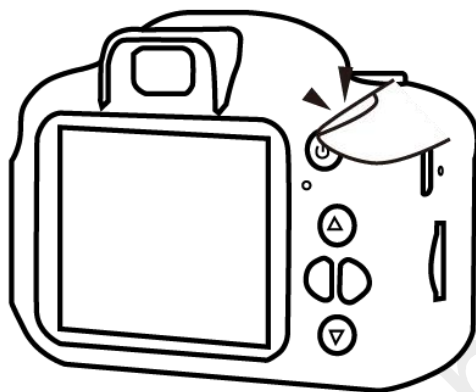


6.5 Appuyez sur le bouton "photo" pour prendre une photo.



VII. Enregistrer une vidéo

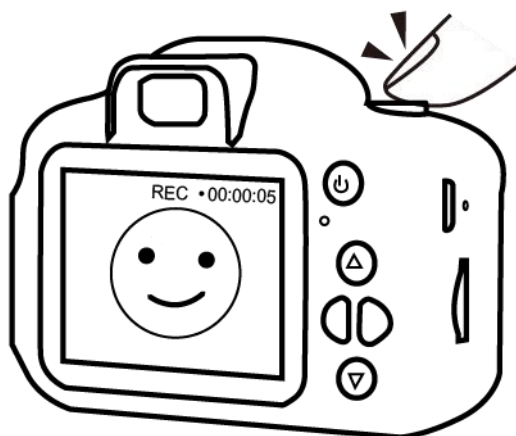
7.1 Maintenez enfoncé le bouton "Marche/Arrêt" pendant 2 secondes pour allumer l'camera.



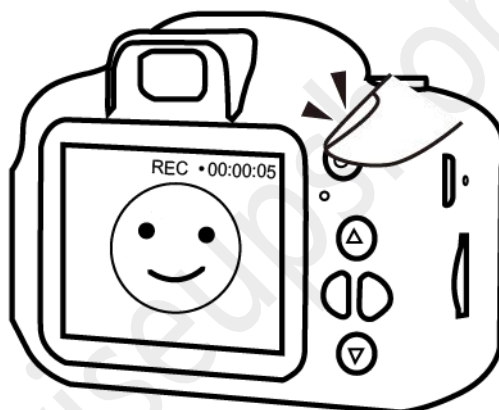
7.2 Sélectionnez "enregistrement vidéo" en appuyant sur le bouton "avant" ou "arrière", puis appuyez sur le bouton "confirmer" pour entrer en mode d'enregistrement vidéo.



7.3 Appuyez sur le bouton "enregistrer" pour démarrer l'enregistrement vidéo.



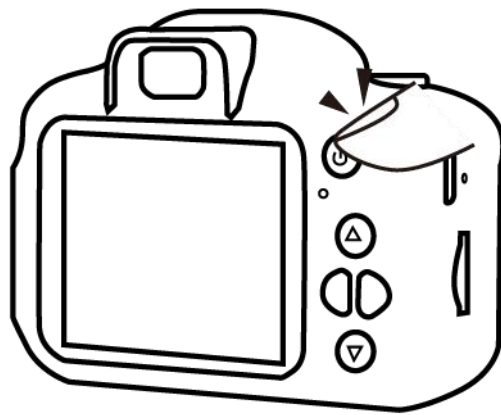
7.4 Appuyez sur le bouton "Sortie" pour arrêter l'enregistrement vidéo.



Remarques : chaque clip vidéo sera généré et enregistré automatiquement toutes les 3 minutes.

VIII. Relecture

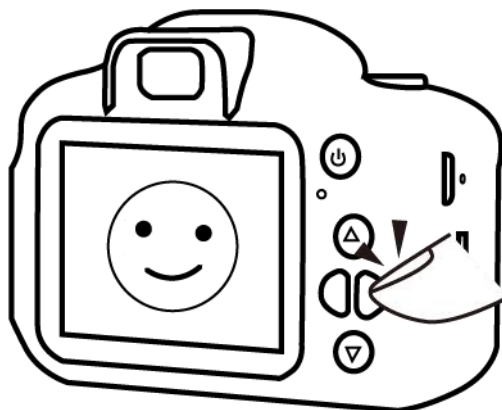
8.1 Maintenez enfoncé le bouton "Marche/Arrêt" pendant 2 secondes pour allumer l'camera.



8.2 Sélectionnez "lecture" en appuyant sur le bouton "etour" ou "avant", puis appuyez sur le bouton "confirmer".

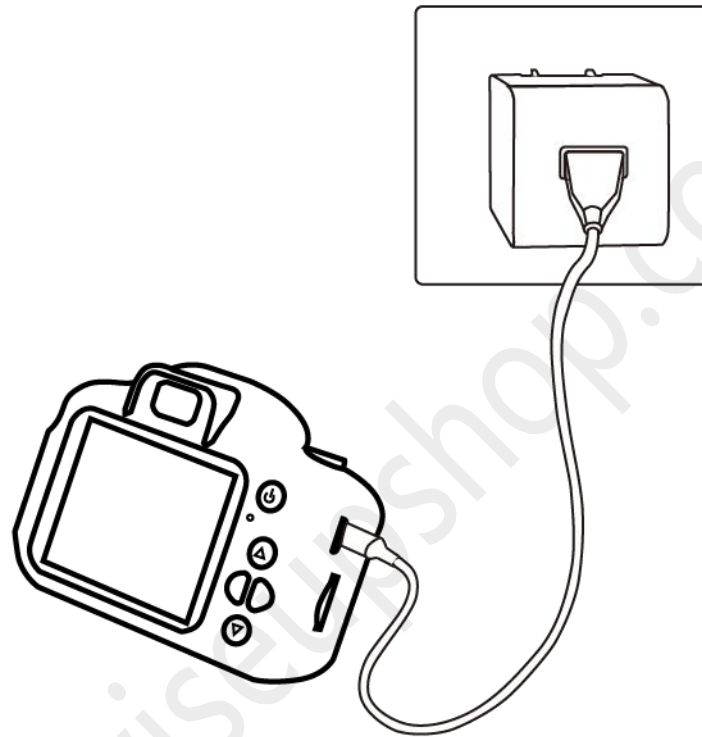


8.3 Appuyez sur le bouton "avant" ou "arrière" pour parcourir les photos et les fichiers vidéo.



IX. Recharger

Branchez cette caméra sur une prise d'alimentation externe avec le câble USB et le chargeur USB DC5V 1A pour commencer à charger.

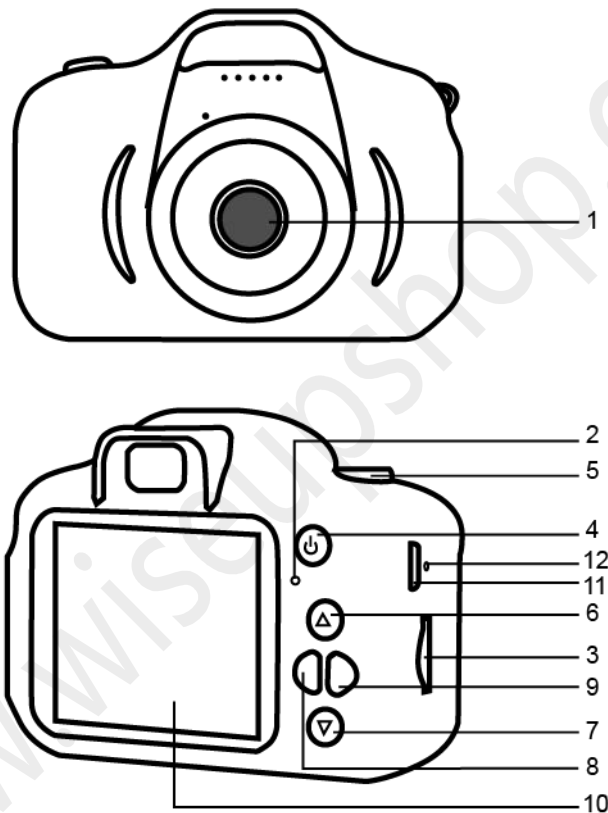


Remarques : la batterie peut être complètement chargée en 40 minutes, vous pouvez vérifier l'état de charge en appuyant sur le bouton "marche/arrêt".

Manuale d'uso

Numero di modello: DV-10

I. Panoramica del prodotto



1. Obiettivo della fotocamera
2. Indicatore luminoso
3. Slot per scheda Micro SD
4. On/Off/Ritorno/Uscita
5. Foto/Registra/Conferma
6. Su

7. Giù
8. Impostazione/Indietro
9. Album/Avanti
10. Schermo LCD
11. Porta USB
12. Pulsante di ripristino

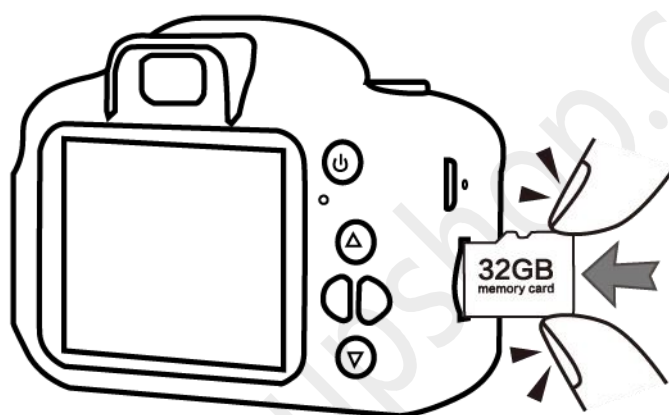
II. Cosa c'è nella scatola?

-1x Mini DV

-1x Cavo USB

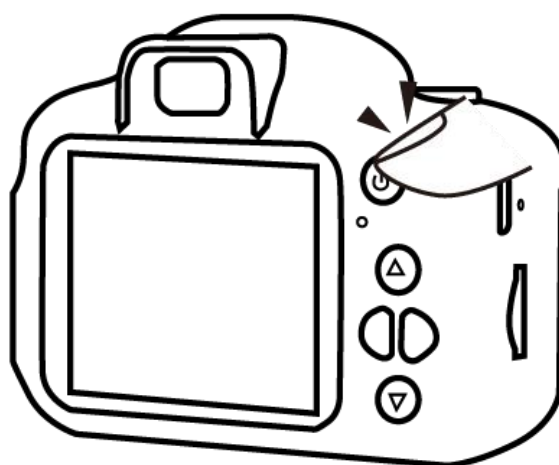
III. Prepara la fotocamera

3.1 Inserire una scheda di memoria in questa fotocamera, la capacità della scheda di memoria non deve superare i 32GB in max.

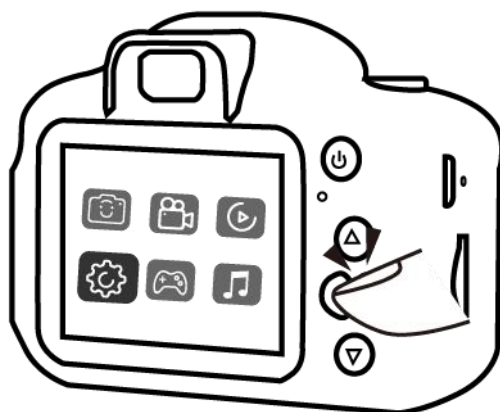


IV. Imposta la fotocamera

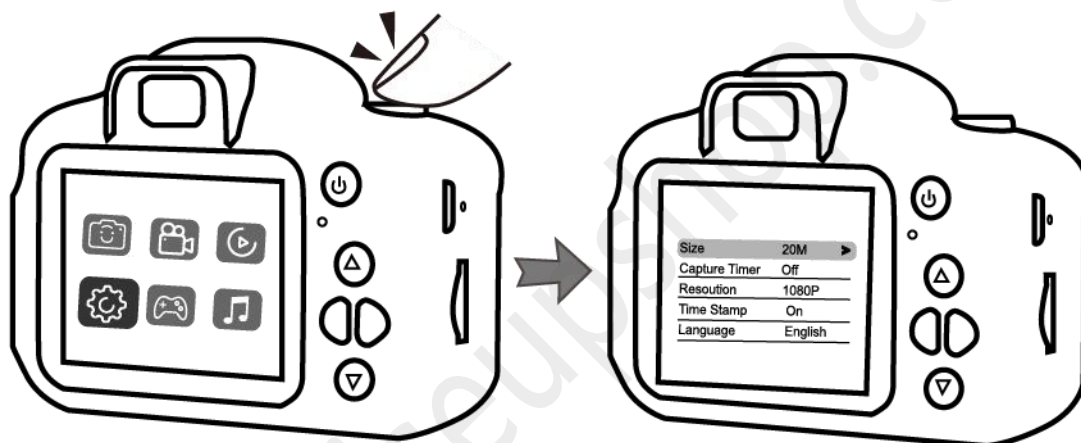
4.1 Tenere premuto il pulsante "On/Off" per 2 secondi per accendere la fotocamera.



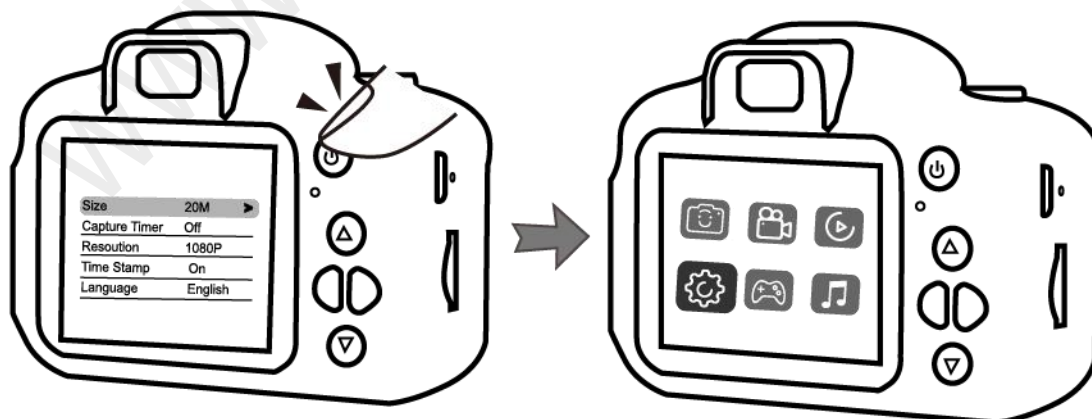
4.2 Selezionare "impostazione".



4.3 Premere il pulsante "conferma" per accedere alle impostazioni della telecamera.

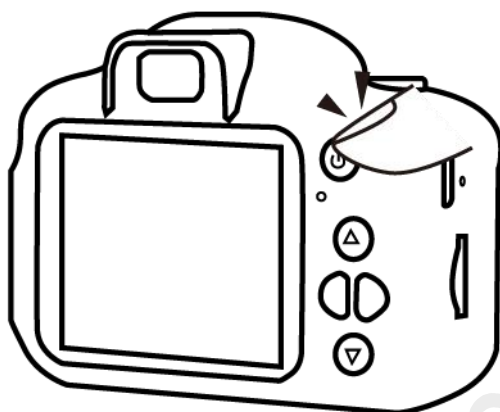


4.4 Premere il pulsante "Uscita" per uscire dall'impostazione della fotocamera.



V. Elimina foto o file video

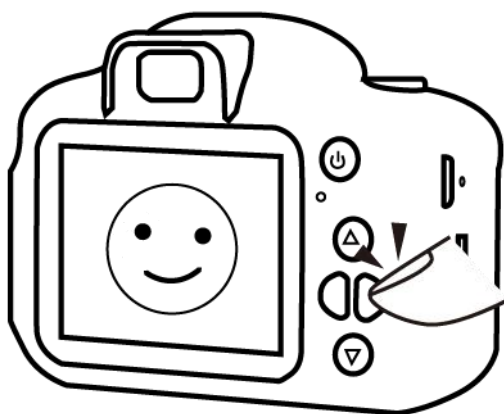
5.1 Tenere premuto il pulsante "On/Off" per 2 secondi per accendere la fotocamera.



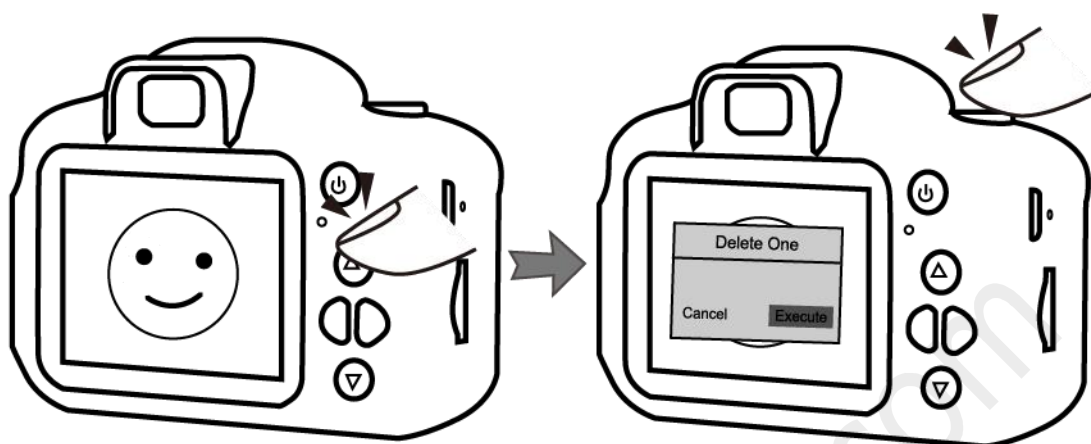
5.2 Selezionare "riproduzione" premendo il tasto "avanti", quindi premere il tasto "conferma".



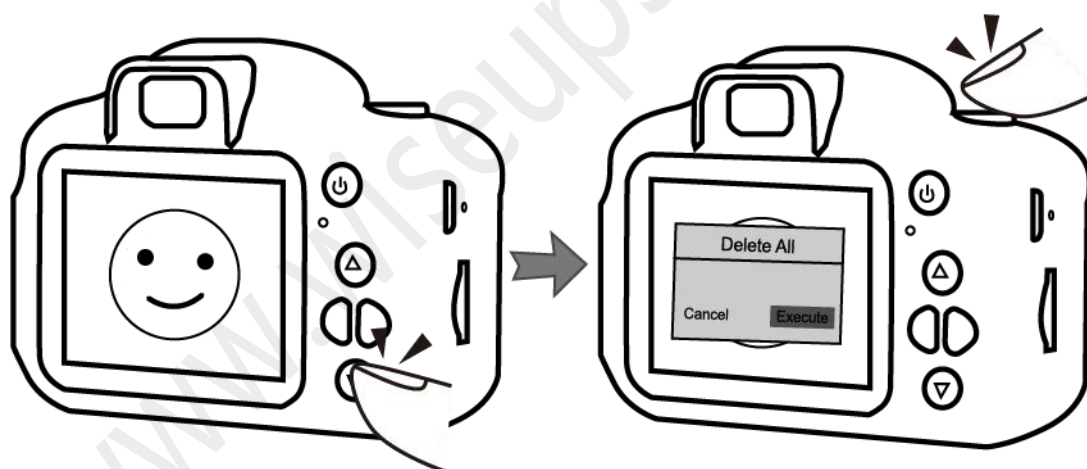
5.3 Scegli una foto o un video premendo il pulsante "avanti" o "indietro".



5.4 Premere il pulsante "su", scegliere "esegui", quindi premere il pulsante "conferma" per eliminare la foto o il file video selezionato.

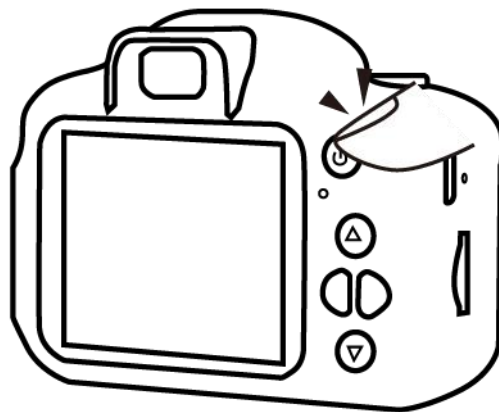


5.5 Premere il pulsante "giù", scegliere "esegui", quindi premere il pulsante "conferma" per eliminare tutte le foto o i file video presenti nella memoria.



VI. Fotografare

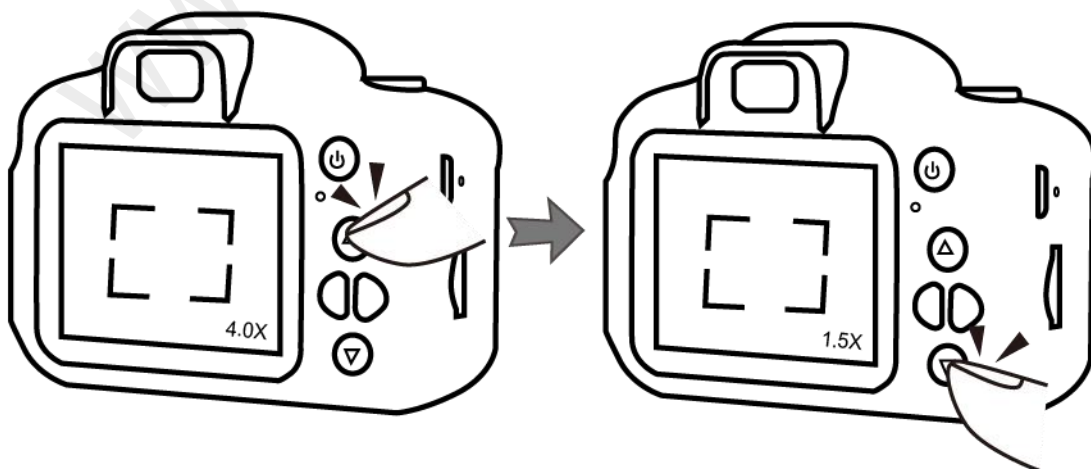
6.1 Tenere premuto il pulsante "On/Off" per 2 secondi per accendere la fotocamera.



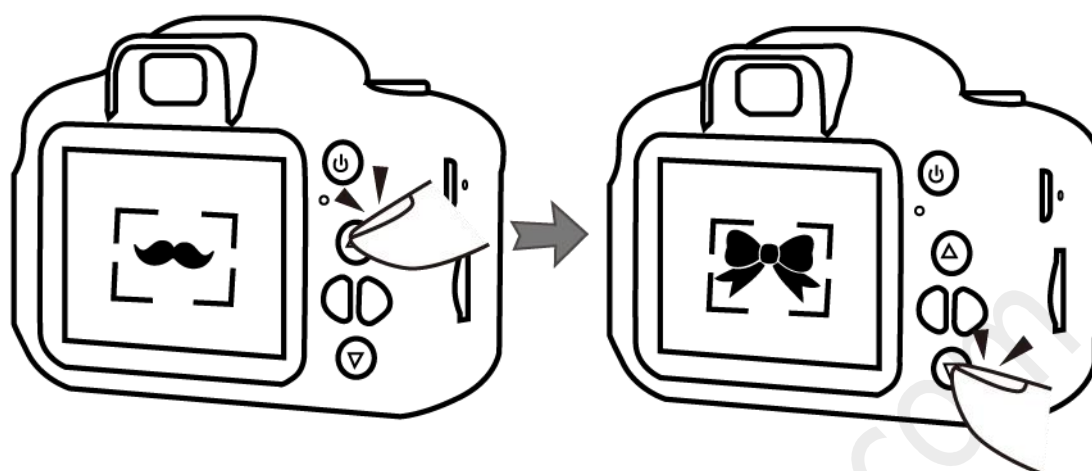
6.2 Selezionare "Fotografare" premendo il pulsante "avanti" o "indietro", quindi premere il pulsante "conferma" per entrare in modalità fotografia.



6.3 Tenere premuto il pulsante "su" o "giù" per ingrandire o rimpicciolire.



6.4 Premere il pulsante "su" o "giù" per selezionare un filtro immagine o un adesivo fotografico.

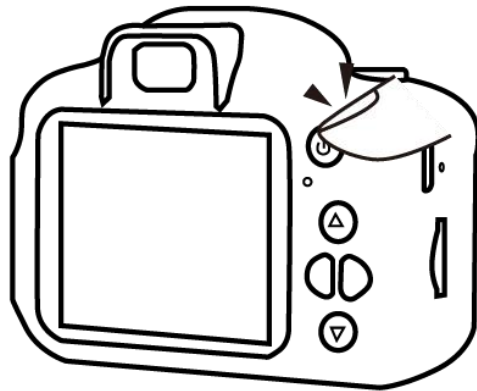


6.6 Premere il pulsante "foto" per scattare una foto.



VII. Registrare video

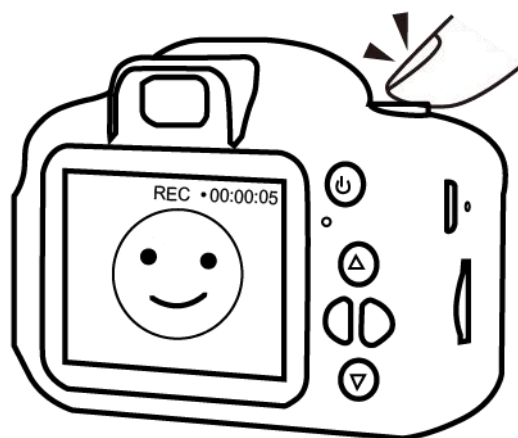
7.1 Tenere premuto il pulsante "On/Off" per 2 secondi per accendere la fotocamera.



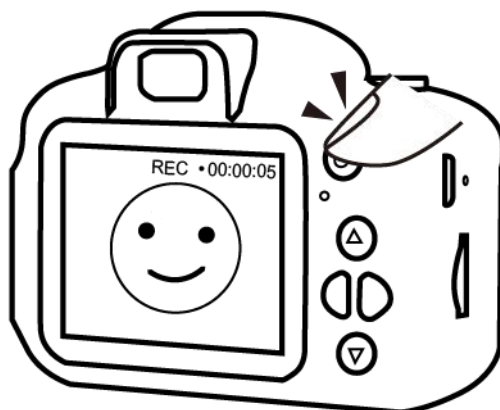
7.2 Selezionare "registrazione video" premendo il pulsante "avanti" o "indietro", quindi premere il pulsante "conferma" per accedere alla modalità di registrazione video.



7.3 Premere il pulsante "Registra" per avviare la registrazione video.



7.4 Premere il pulsante "Uscita" per interrompere la registrazione video.



Nota: ogni video clip verrà generato e salvato automaticamente ogni 3 minuti.

VIII. Riproduzione

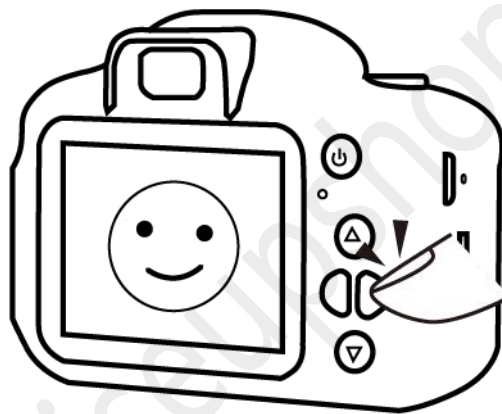
8.1 Tenere premuto il pulsante "On/Off" per 2 secondi per accendere la fotocamera.



8.2 Selezionare "riproduzione" premendo il pulsante "indietro" o "avanti", quindi premere il pulsante "conferma".

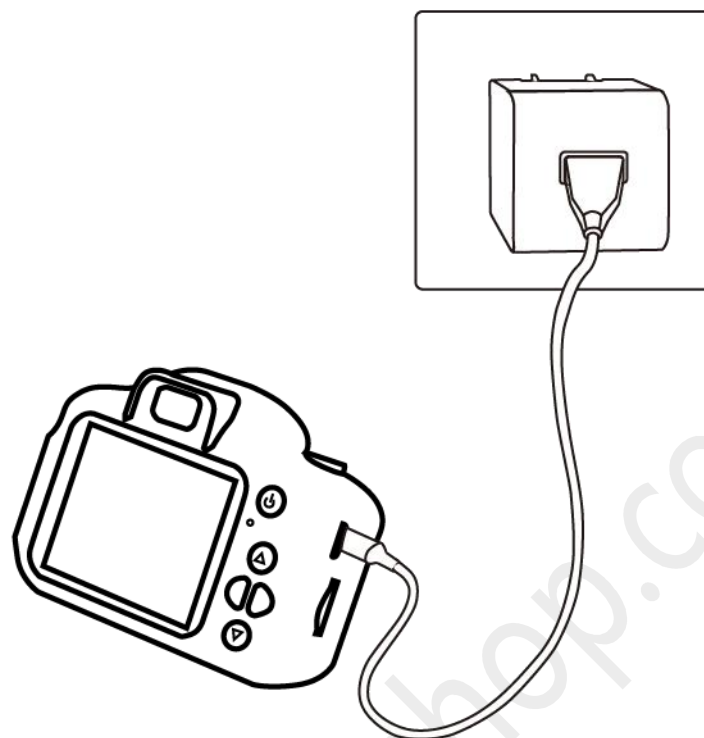


8.3 Premere il pulsante "avanti" o "indietro" per sfogliare foto e file video.



IX. Ricaricare

Collega questa fotocamera a una presa di alimentazione esterna con il cavo USB e il caricatore USB DC5V 1A per avviare la ricarica.

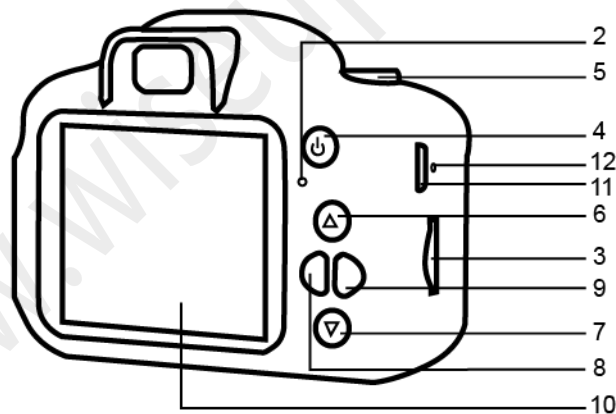
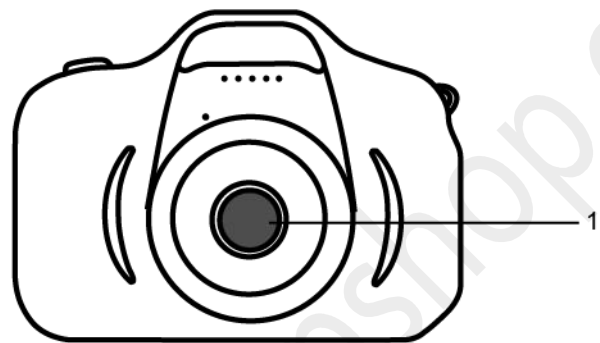


Nota: la batteria potrebbe essere caricata completamente in 40 minuti, è possibile verificare lo stato di carica premendo il pulsante "on/off".

Manual de usuario

Número de modelo: DV-10

I. Descripción general del producto



1. Lente de la cámara

2. Luz indicadora

3. Ranura para tarjeta Micro SD

4. Encendido/Apagado/Volver/Salir

5. Foto/Grabar/Confirmar

6. Arriba

7. Abajo

8. Configuración/Atrás

9. Álbum/Adelante

10. Pantalla LCD

11. Puerto USB

12. Botón de reinicio

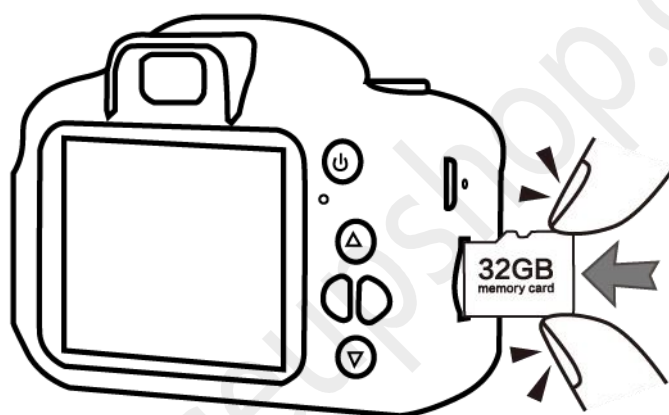
II. ¿Qué hay en la caja?

-1x Mini DV

-1x Cable USB

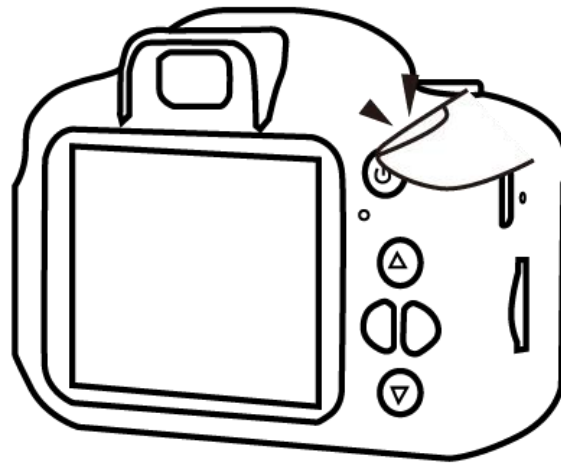
III. Prepara la cámara

3.1 Inserte una tarjeta de memoria en esta cámara, la capacidad de la tarjeta de memoria no debe superar los 32GB como máximo.

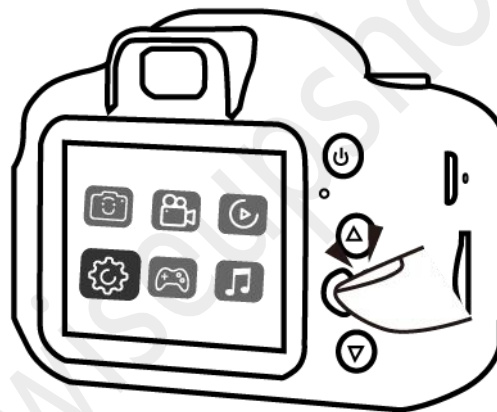


IV. Configurar la cámara

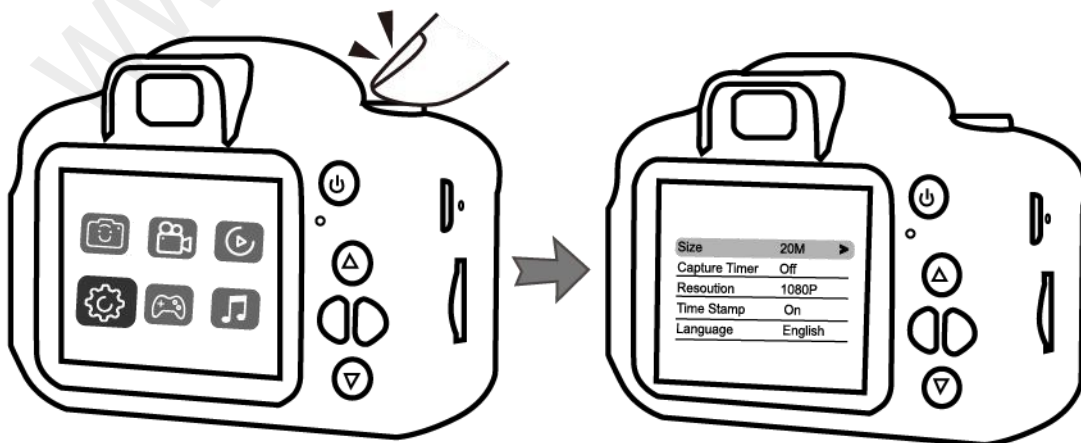
4.1 Mantenga presionado el botón "Encender/Apagar" durante 2 segundos para encender la cámara.



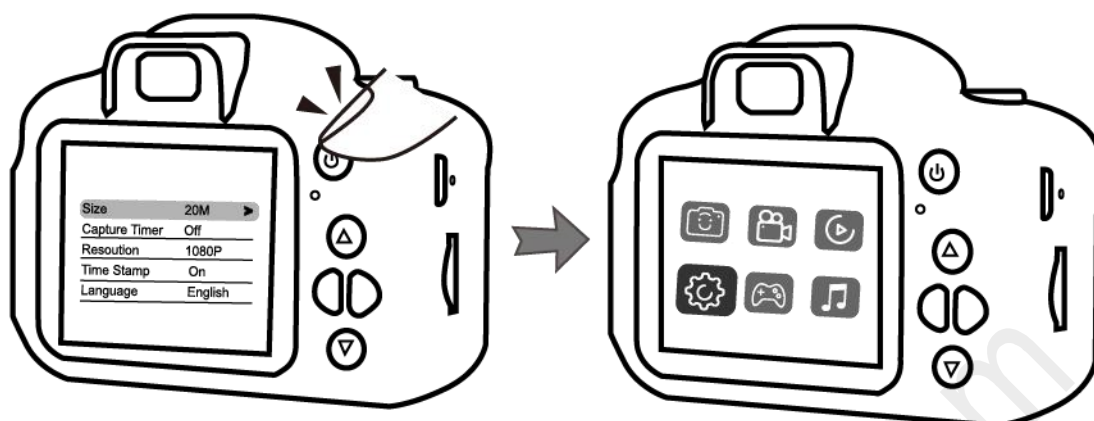
4.2 Seleccione "configuración".



4.3 Presione el botón "confirmar" para ingresar a la configuración de la cámara.



4.4 Pulse el botón "Salir" para salir de la configuración de la cámara.



V. Eliminar fotos o archivos de video

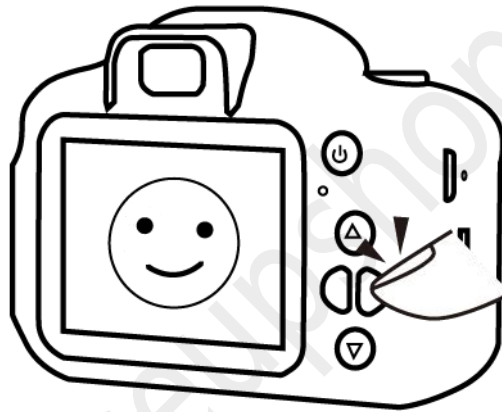
5.1 Mantenga presionado el botón "Encender/Apagar" durante 2 segundos para encender la cámara.



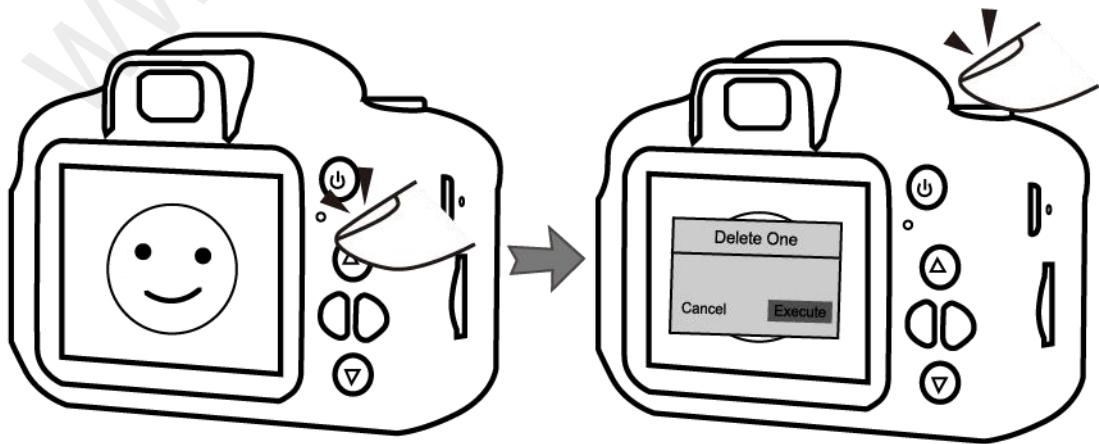
5.2 Seleccione "reproducir" presionando el "adelante", luego presione el botón "confirmar".



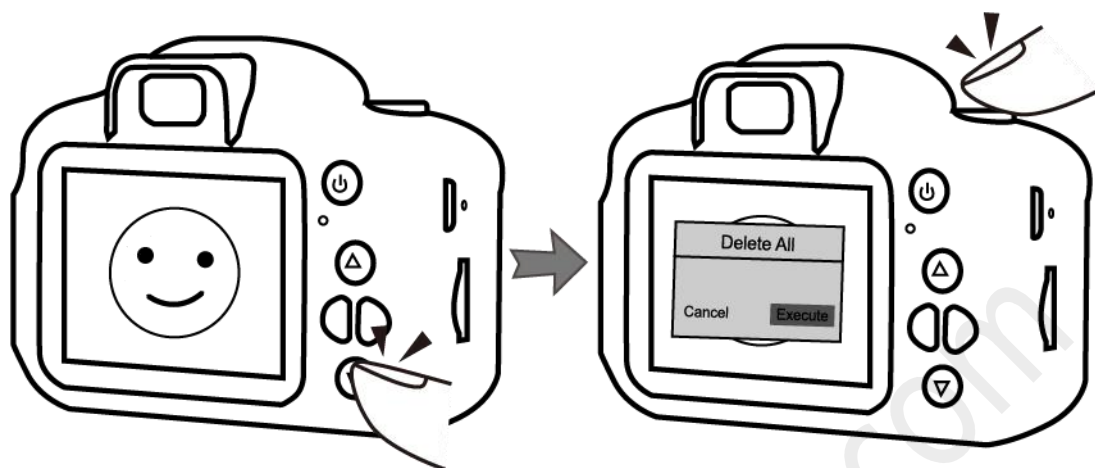
5.3 Elija una foto o video presionando el botón "adelante" o "atrás".



5.4 Presione el botón "arriba", elija "ejecutar", luego presione el botón "confirmar" para eliminar el archivo de foto o video seleccionado.



5.5 Presione el botón "abajo", elija "ejecutar", luego presione el botón "confirmar" para eliminar todas las fotos o archivos de video en la memoria.

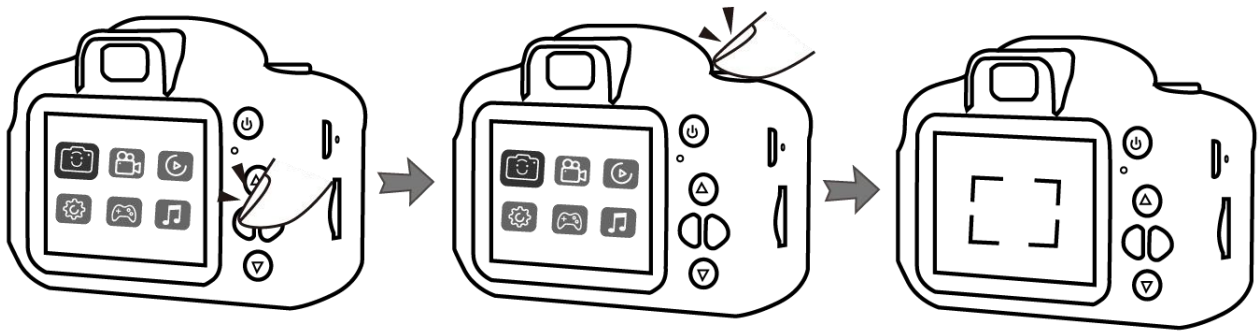


VI. Fotografiando

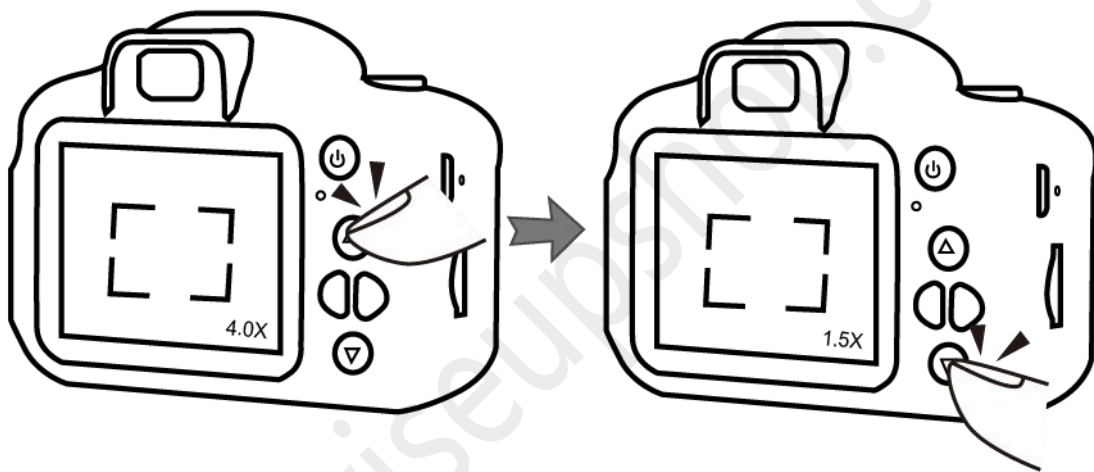
6.1 Mantenga presionado el botón "Encender/Apagar" durante 2 segundos para encender la cámara.



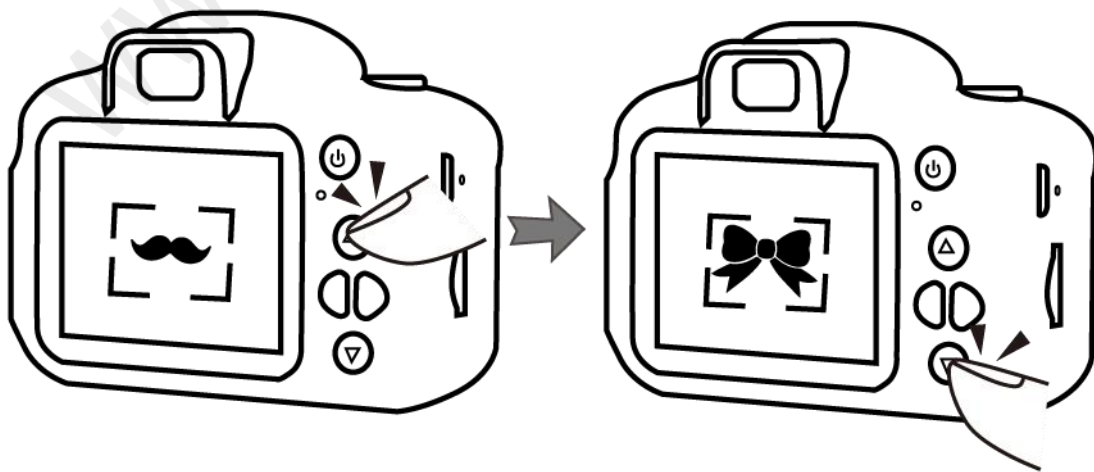
6.2 Seleccione "Fotografía" presionando el botón "adelante" o "atrás", luego presione el botón "confirmar" para ingresar al modo de fotografía.



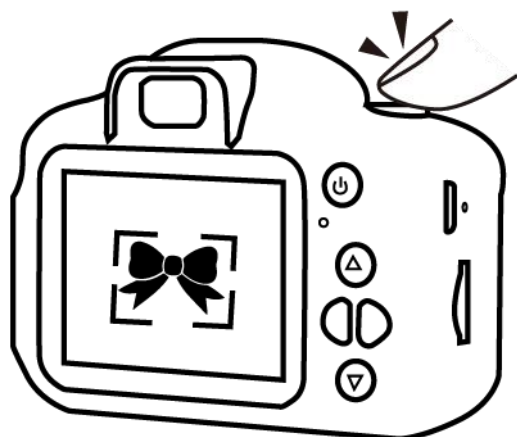
6.3 Mantenga presionado el botón "arriba" o "abajo" para acercar o alejar la imagen.



6.4 Presione el botón "arriba" o "abajo" para seleccionar un filtro de imagen o una etiqueta de foto.



6.5 Presione el botón "foto" para tomar una foto.

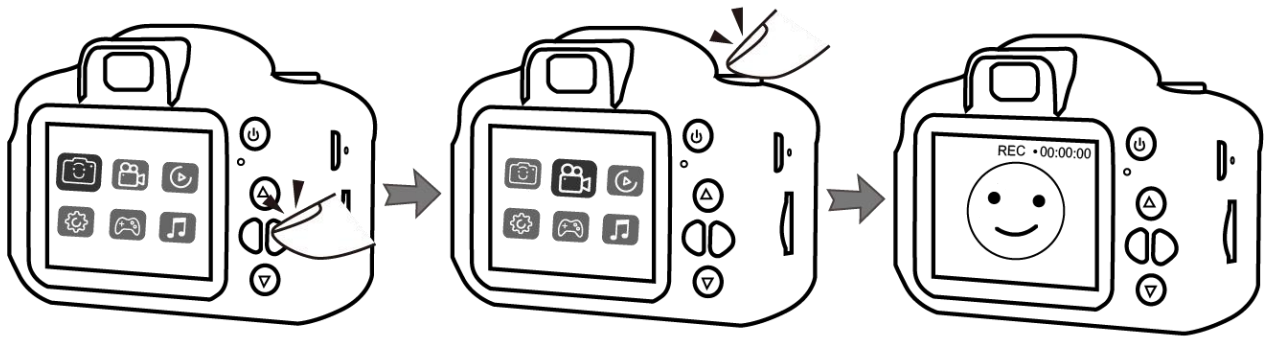


VIII. Grabar video

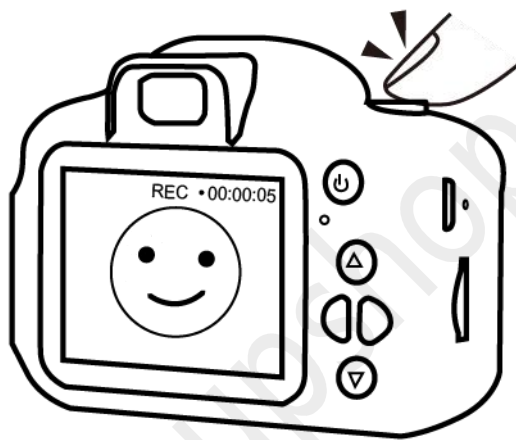
7.1 Mantenga presionado el botón "Encender/Apagar" durante 2 segundos para encender la cámara.



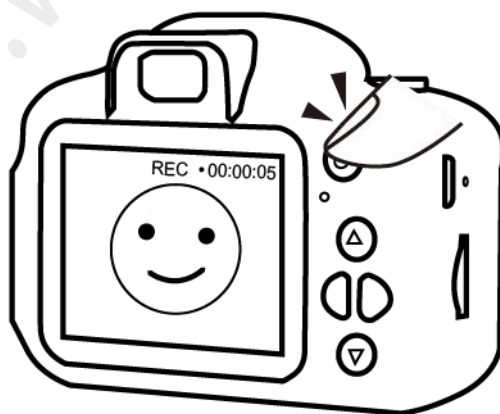
7.2 Seleccione "grabación de video" presionando el botón "adelante" o "atrás", luego presione el botón "confirmar" para ingresar al modo de grabación de video.



7.3 Presione el botón "grabar" para iniciar la grabación de video.



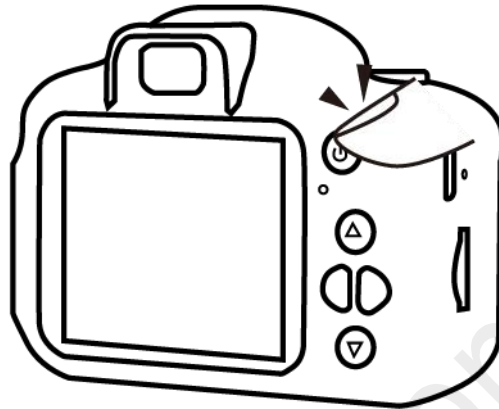
7.4 Presione el botón "Salir" para detener la grabación de video.



Notas: cada clip de video se generará y guardará automáticamente cada 3 minutos.

VIII. Reproducción

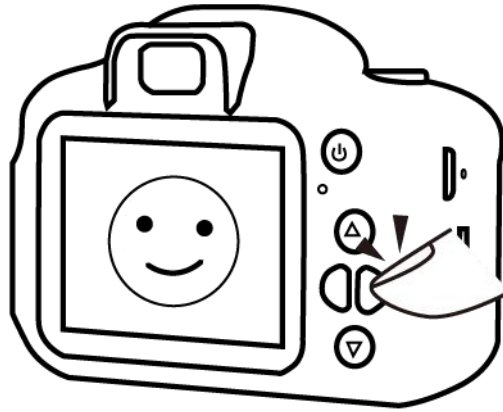
8.1 Mantenga presionado el botón "Encender/Apagar" durante 2 segundos para encender la cámara.



8.2 Seleccione "reproducir" presionando el botón "atrás" o "adelante", luego presione el botón "confirmar".

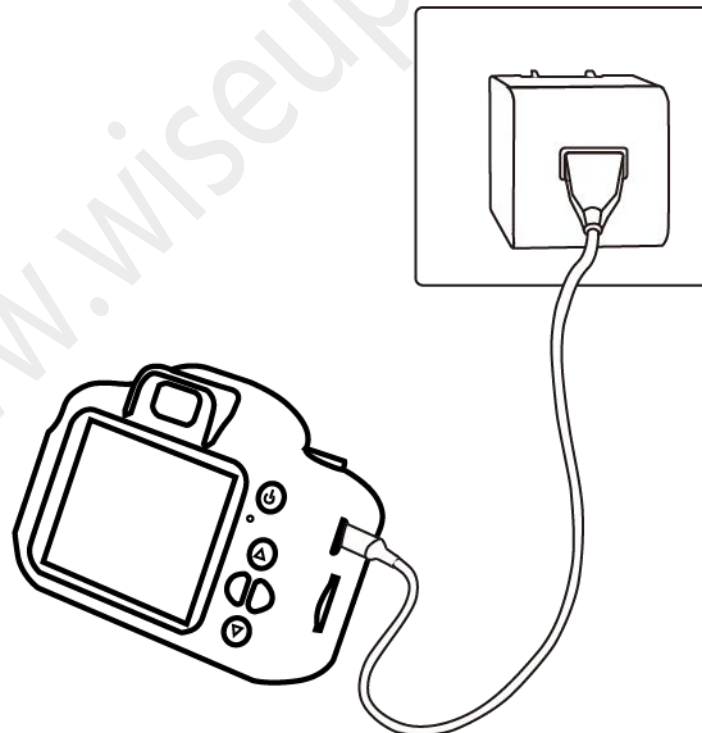


8.3 Presione el botón "adelante" o "atrás" para buscar fotos y archivos de video.



IX. Recargar

Conecte esta cámara a una toma de corriente externa con el cable USB y el cargador USB DC5V 1A para comenzar a cargar.

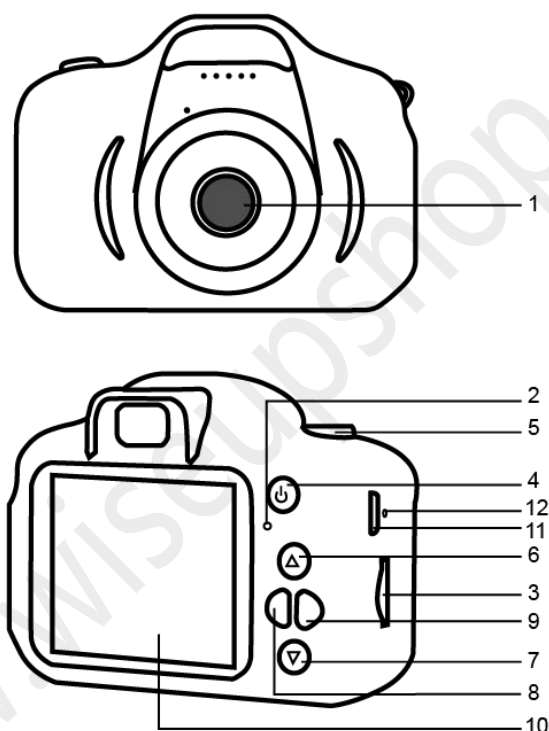


Notas: la batería podría cargarse completamente en 40 minutos, puede verificar el estado de carga presionando el botón "encender / apagar".

ユーザーマニュアル

モデル番号: DV-10

1. 製品の概要



1.カメラレンズ

2.インジケータライト

3.マイクロ SD カードスロット

4.オン/オフ/リターン/終了

5.写真/記録/確認

6.上

7.下

8.設定/戻る

9.アルバム/進む

10.LCD スクリーン

11.USB ポート

12.リセットボタン

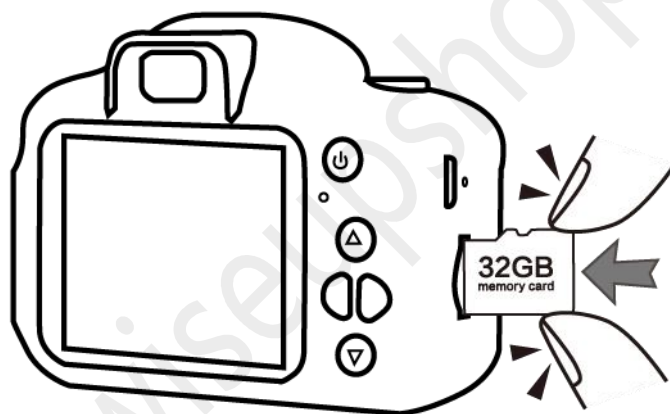
II. 箱の中は何ですか？

-1×ミニ DV

-1×USB ケーブル

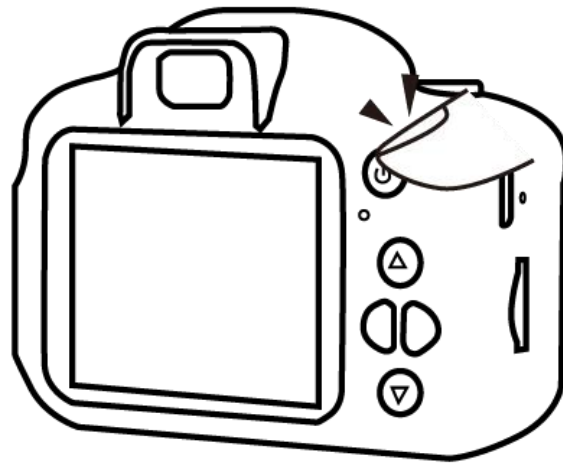
III. カメラを準備する

3.1 このカメラにメモリーカードを挿入します。メモリーカードの容量は最大 32GB を超えてはなりません。

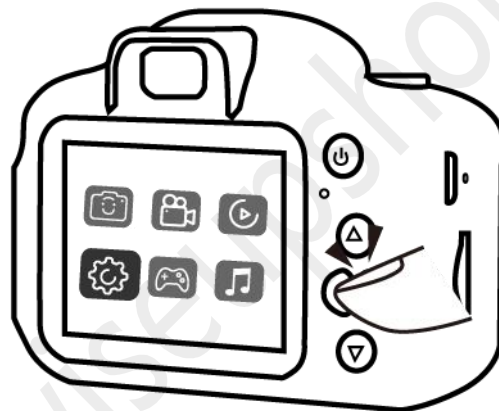


IV. カメラを設定します

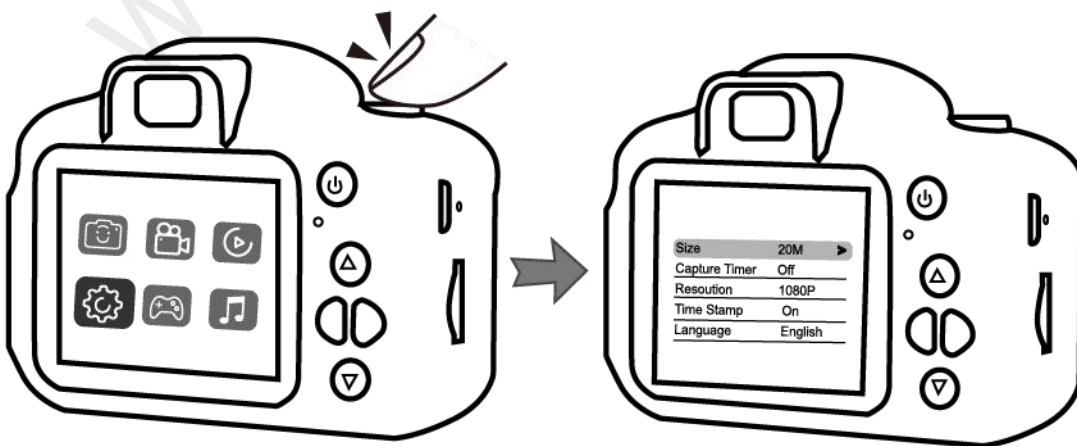
4.1 「オン/オフ」 ボタンを 2 秒間押し続けて、カメラの電源をオンにします。



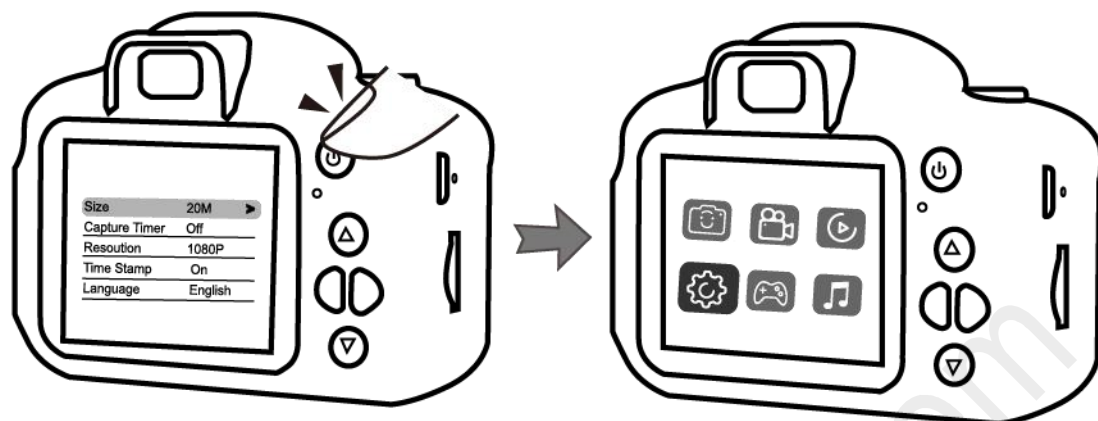
4.2 「設定」を選択します。



4.3 「確認」ボタンを押して、カメラ設定に入ります。



4.4 「終了」 ボタンを押してカメラ設定を終了します。



V. 写真またはビデオファイルを削除する

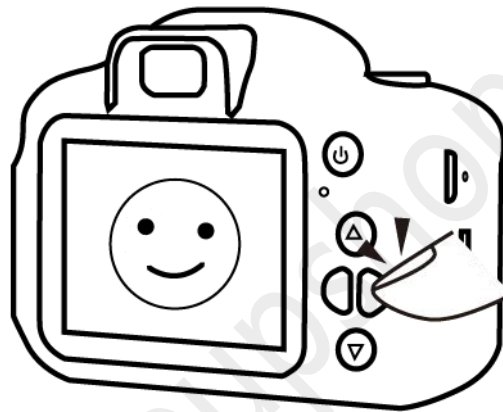
5.1 「オン/オフ」 ボタンを 2 秒間押し続けて、カメラの電源をオンにします。



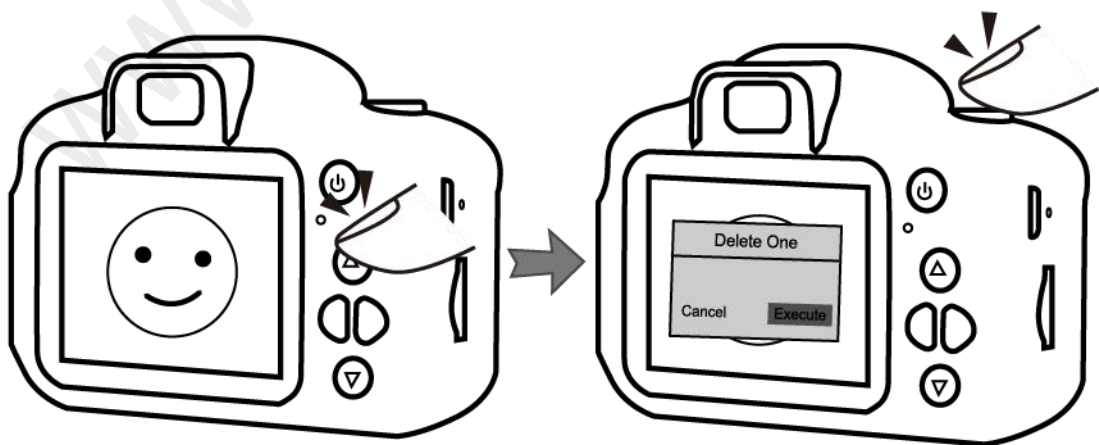
5.2 「進む」 ボタンを押して「再生」を選択し、「確認」ボタンを押します。



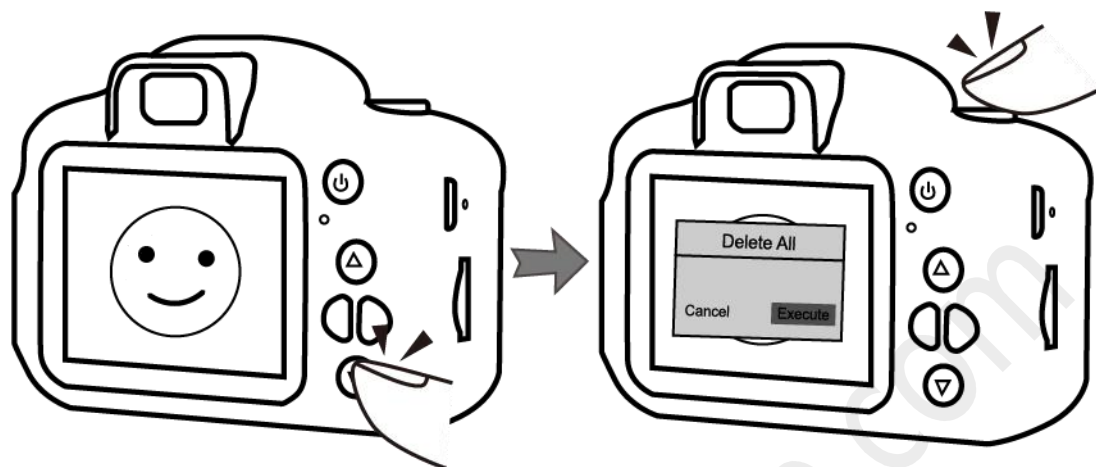
5.3 「進む」または「戻る」ボタンを押して、写真またはビデオを1つ選択します。



5.4 「上」ボタンを押し、「実行」を選択し、「確認」ボタンを押して、選択した写真またはビデオファイルを削除します。

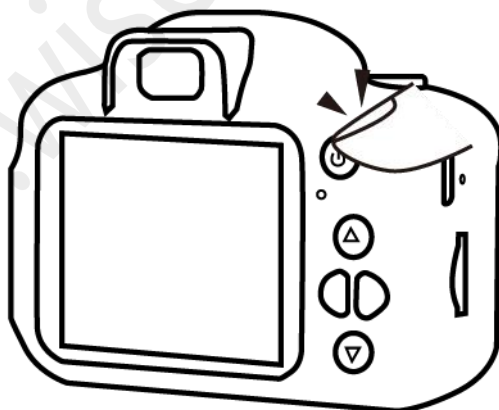


5.5 「下」ボタンを押し、「実行」を選択し、「確認」ボタンを押して、メモリ内のすべての写真またはビデオファイルを削除します。

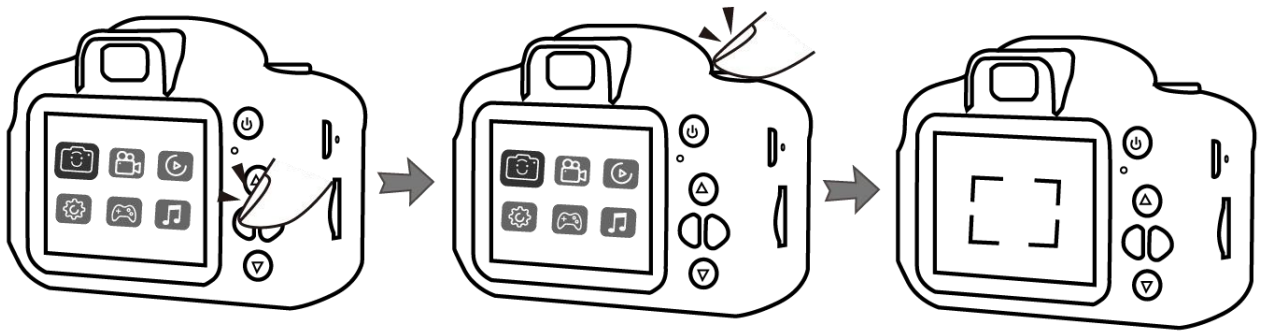


VI. 撮影

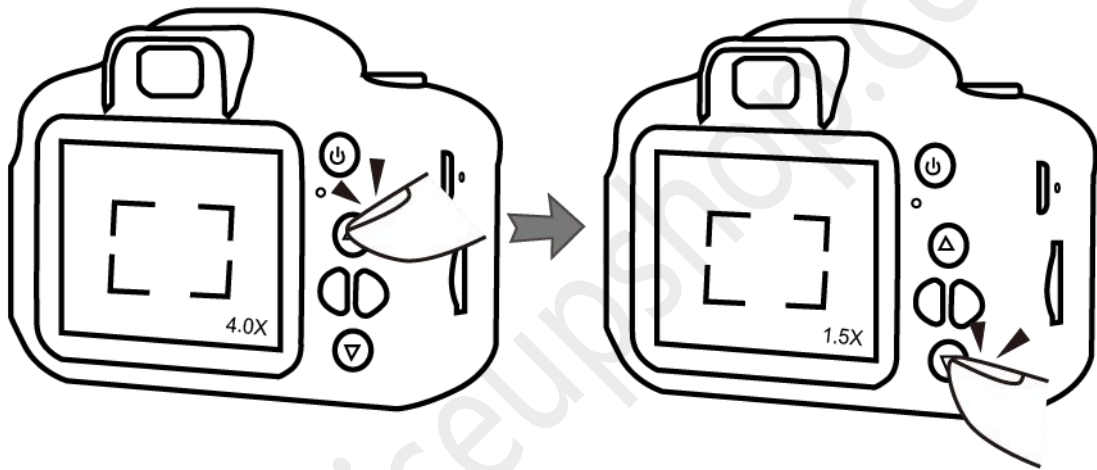
6.1 「オン/オフ」ボタンを2秒間押し続けて、カメラの電源をオンにします。



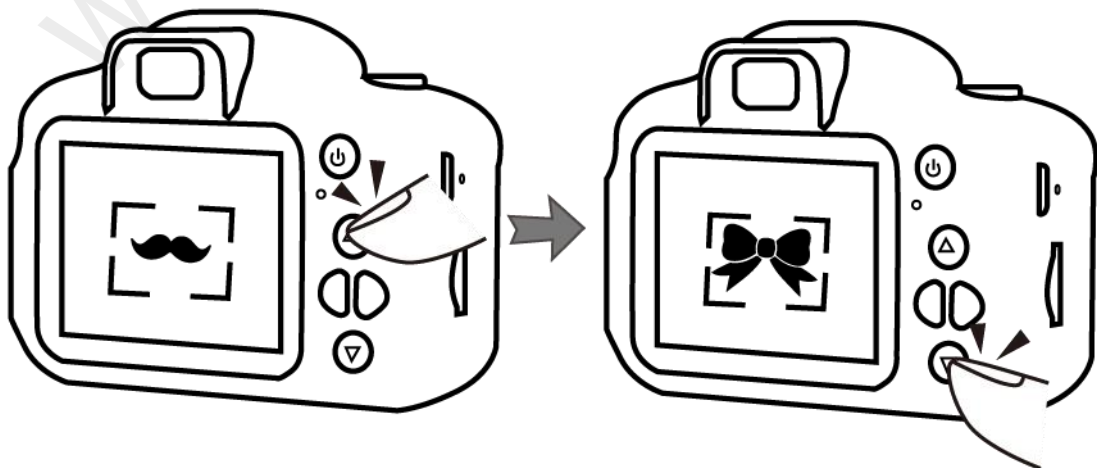
6.2 「進む」または「戻る」ボタンを押して「撮影」を選択し、「確認」ボタンを押して撮影モードに入ります。



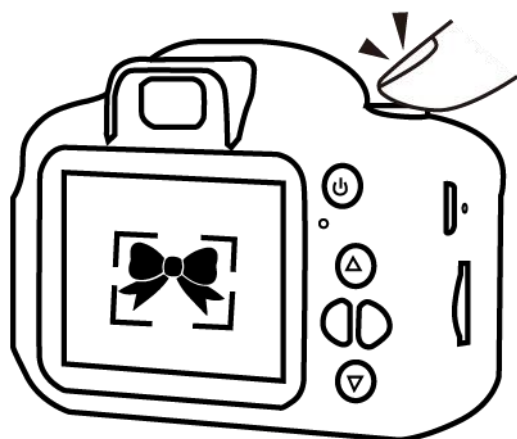
6.3 「上」または「下」ボタンを押したままにして、ズームインまたはズームアウトします。



6.4 「上」または「下」ボタンを押して、画像フィルターまたは写真ステッカーを選択します。



6.5 「写真」 ボタンを押して写真を撮ります。



VII. 録画映像

7.1 「オン/オフ」 ボタンを 2 秒間押し続けて、カメラの電源をオンにします。



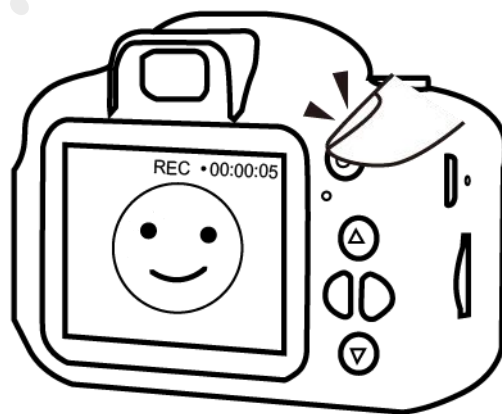
7.2 「進む」または「戻る」 ボタンを押して「ビデオ録画」を選択し、「確認」ボタンを押してビデオ録画モードに入ります。



7.3 「録画」 ボタンを押してビデオ録画を開始します。



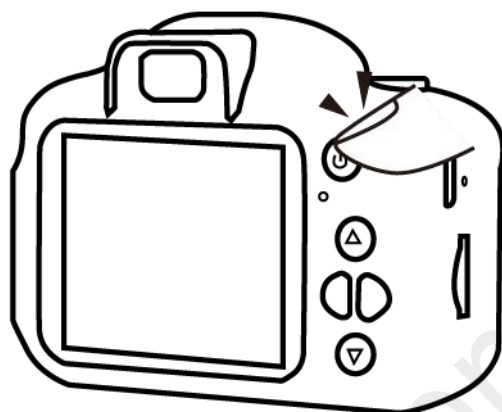
7.4 「終了」 ボタンを押してビデオ録画を停止します。



注: 各ビデオクリップは、3分ごとに自動的に生成および保存されます。

VIII. 再生

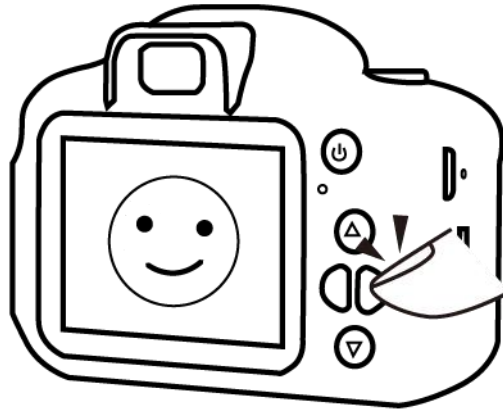
8.1 「オン/オフ」 ボタンを 2 秒間押し続けて、カメラの電源をオンにします。



8.2 「戻る」または「進む」ボタンを押して「再生」を選択し、「確認」ボタンを押します。

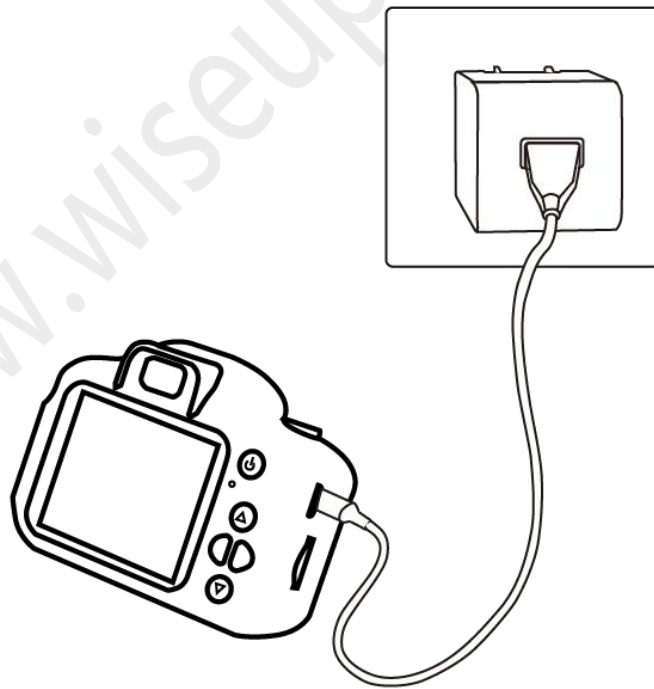


8.3 「進む」または「戻る」ボタンを押して、写真やビデオファイルを閲覧します。



IX. 充電する

このカメラを USB ケーブルと DC5V1AUSB 充電器で外部電源ソケットに接続して、充電を開始します。

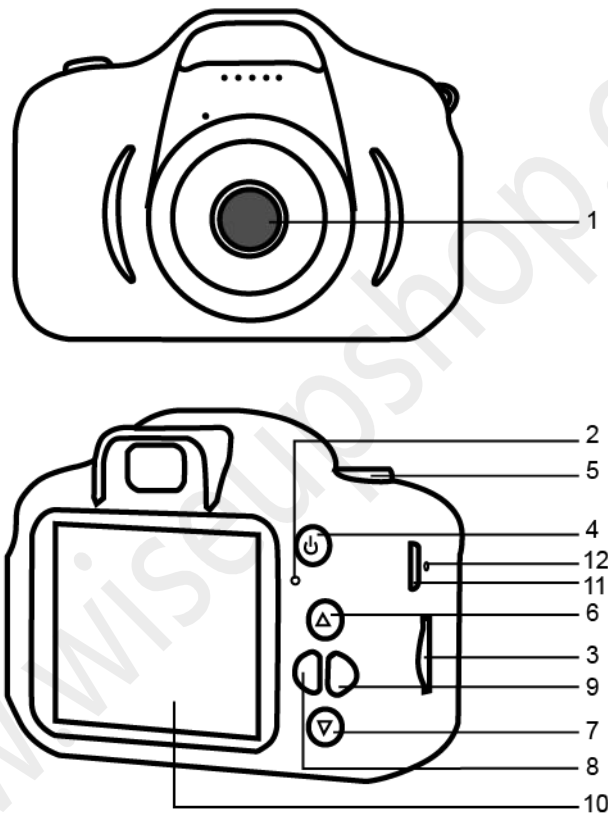


注: バッテリーは 40 分で完全に充電できます。「オン/オフ」ボタンを押すと、充電状態を確認できます。

Manual do usuário

Número do modelo: DV-10

I. Visão geral do produto



1. Lente da câmera

2. Luz Indicadora

3. Ranhura para cartão micro SD

4. Ligar/Desligar/Retornar/Exit

5. Foto/Registro/Confirmar

6. Cima

7. Baixo

8. Configuração/Retroceder

9. Álbum/Avançar

10. Tela LCD

11. Porta USB

12. Botão Redefinir

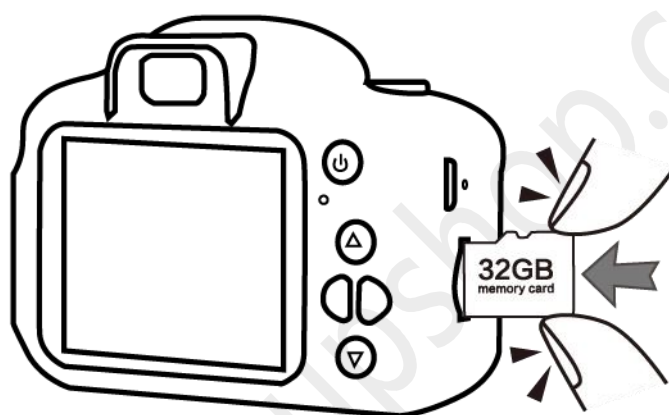
II. O que está na caixa?

-1x MiniDV

-1x Cabo USB

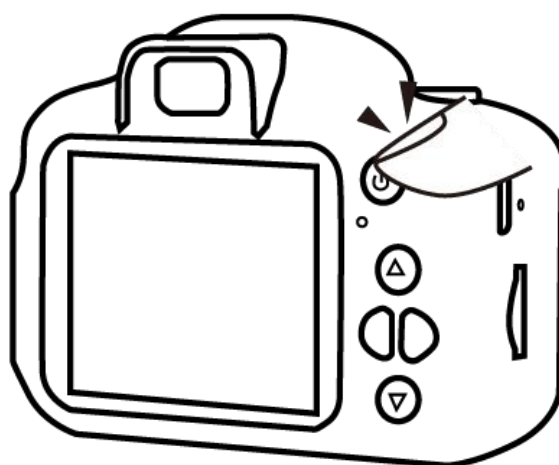
III. Prepare a câmera

3.1 Insira um cartão de memória nesta câmera, a capacidade do cartão de memória não deve ultrapassar 32GB no máximo.

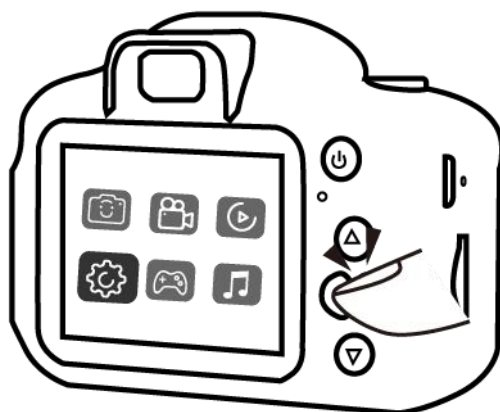


IV. Defina a câmera

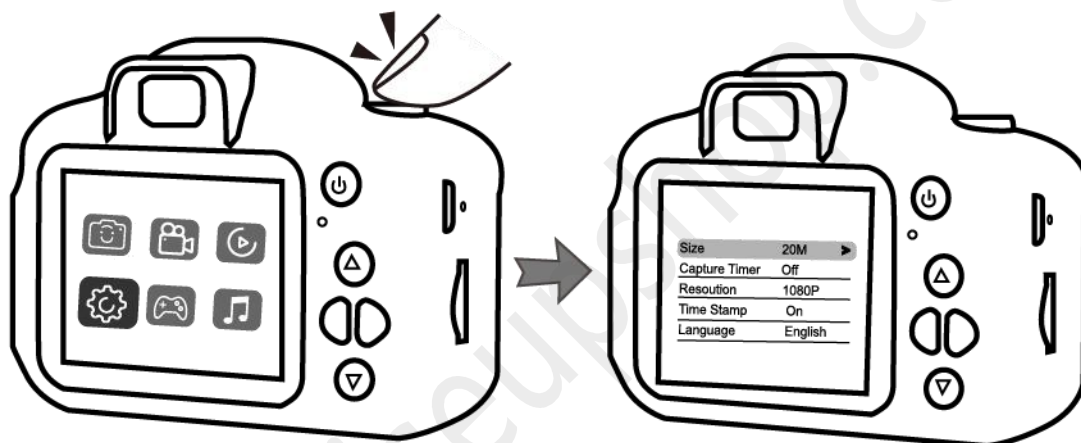
4.1 Mantenha pressionado o botão “Ligar/Desligar” por 2 segundos para ligar a câmera.



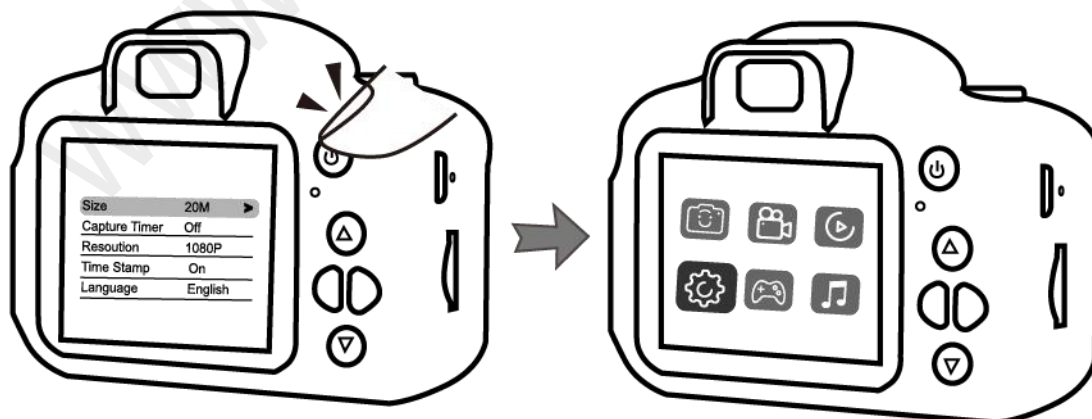
4.2 Selecione “configuração”.



4.3 Pressione o botão “confirmar” para entrar na configuração da câmera.

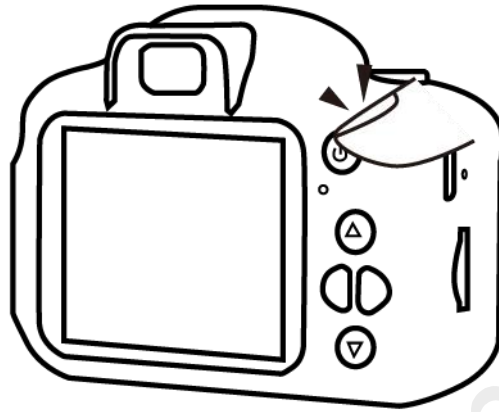


4.4 Pressione o botão “Exit” para sair da configuração da câmera.



V. Excluir fotos ou arquivos de vídeo

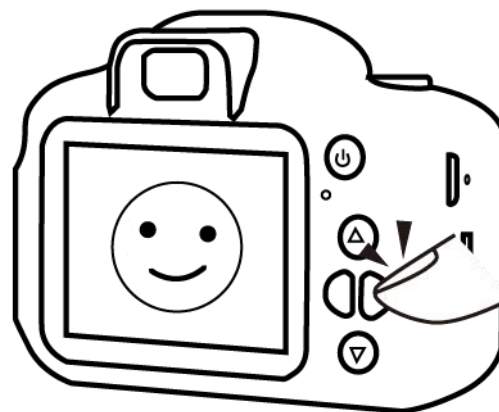
5.1 Mantenha pressionado o botão “Ligar/Desligar” por 2 segundos para ligar a câmera.



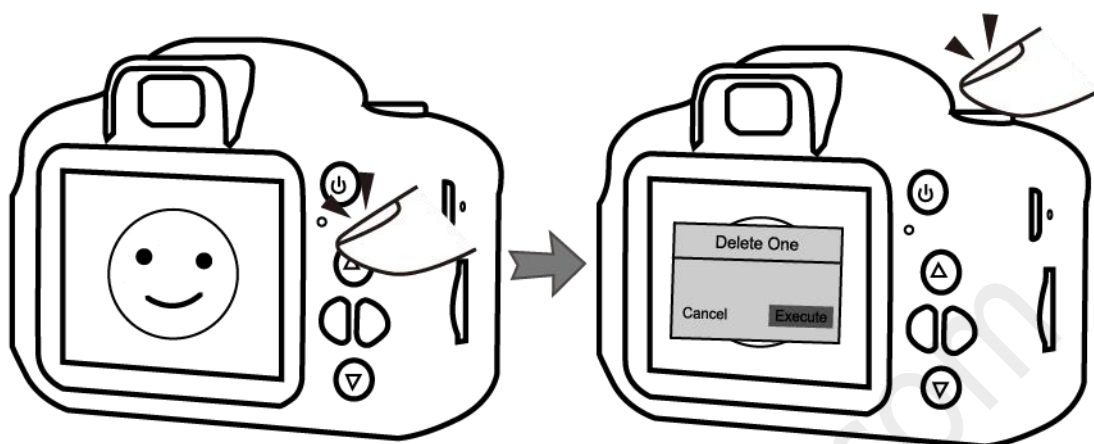
5.2 Selecione “reprodução” pressionando o “avançar” e depois pressione o botão “confirmar”.



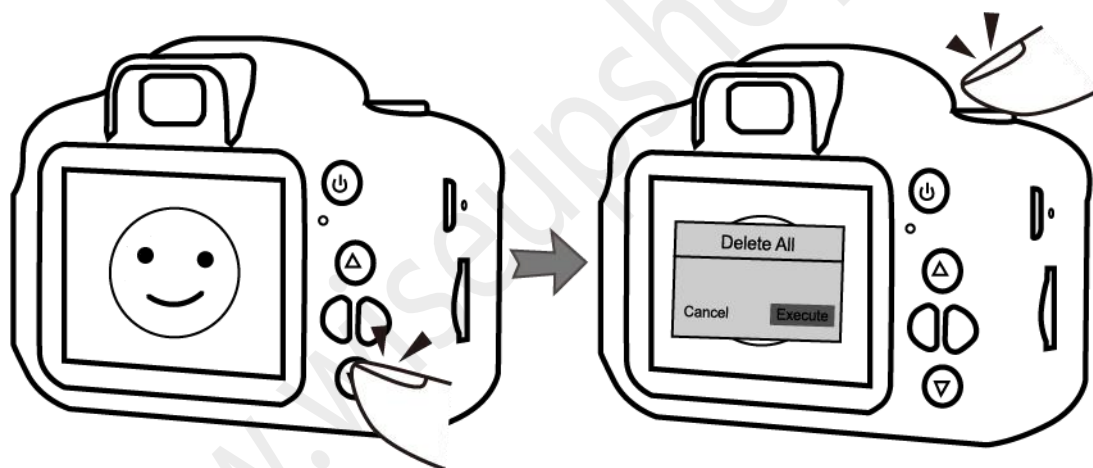
5.3 Escolha uma foto ou vídeo pressionando o botão “avançar” ou “voltar”.



5.4 Pressione o botão “cima”, escolha “executar” e pressione o botão “confirmar” para excluir a foto ou arquivo de vídeo selecionado.

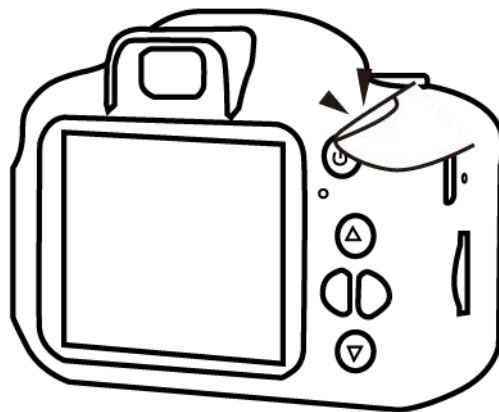


5.5 Pressione o botão “baixo”, escolha “executar” e pressione o botão “confirmar” para excluir todas as fotos ou arquivos de vídeo na memória.



VI. Fotografar

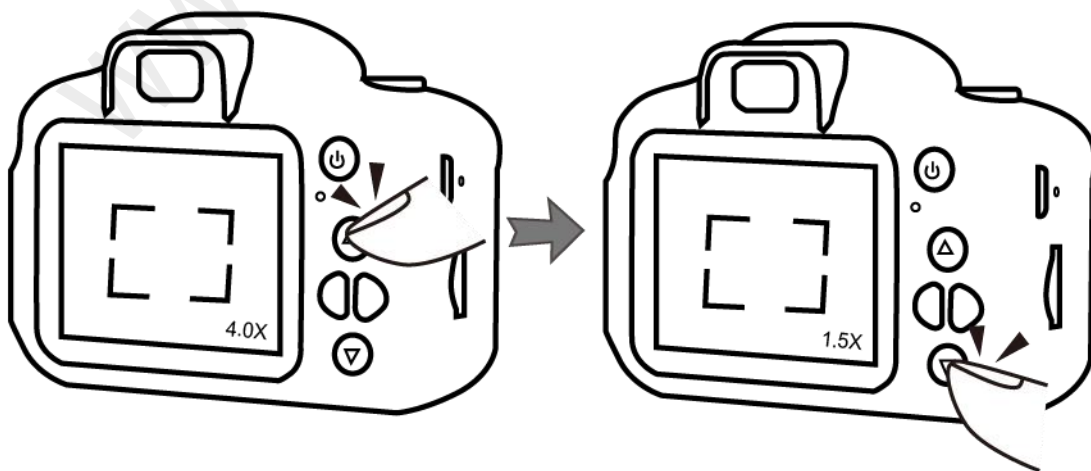
6.1 Mantenha pressionado o botão “Ligar/Desligar” por 2 segundos para ligar a câmera.



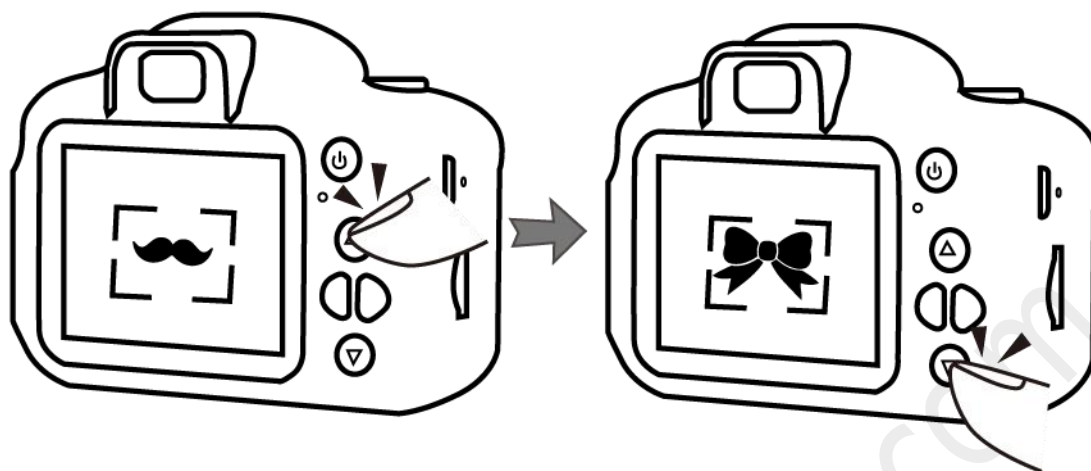
6.2 Selecione “Fotografar” pressionando o botão “avançar” ou “retroceder”, depois pressione o botão “confirmar” para entrar no modo de fotografia.



6.3 Mantenha pressionado o botão “cima” ou “baixo” para aumentar ou diminuir o zoom.



6.4 Pressione o botão “cima” ou “baixo” para selecionar um filtro de imagem ou adesivo de foto.

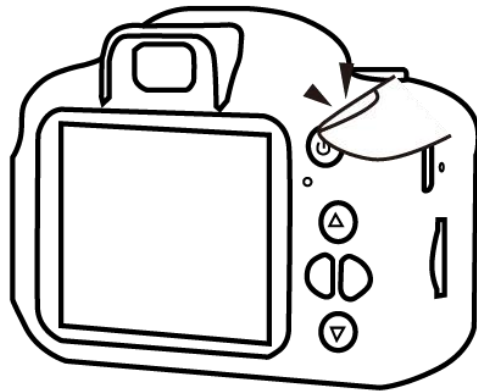


6.5 Pressione o botão “foto” para tirar uma foto.



VII. Gravar vídeo

7.1 Mantenha pressionado o botão “Ligar/Desligar” por 2 segundos para ligar a câmera.



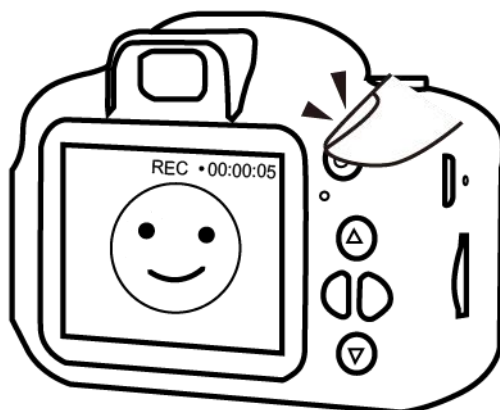
7.2 Selecione “gravação de vídeo” pressionando o botão “avançar” ou “retroceder”, depois pressione o botão “confirmar” para entrar no modo de gravação de vídeo.



7.3 Pressione o botão “gravar” para iniciar a gravação do vídeo.



7.4 Pressione o botão “Exit” para parar a gravação de vídeo.



Notas: cada videoclipe será gerado e salvo automaticamente a cada 3 minutos.

VIII. Reprodução

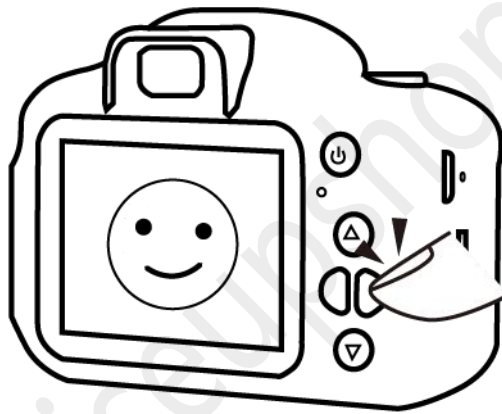
8.1 Mantenha pressionado o botão “Ligar/Desligar” por 2 segundos para ligar a câmera.



8.2 Selecione “reprodução” pressionando o botão “retroceder” ou “avançar” e, em seguida, pressione o botão “confirmar”.

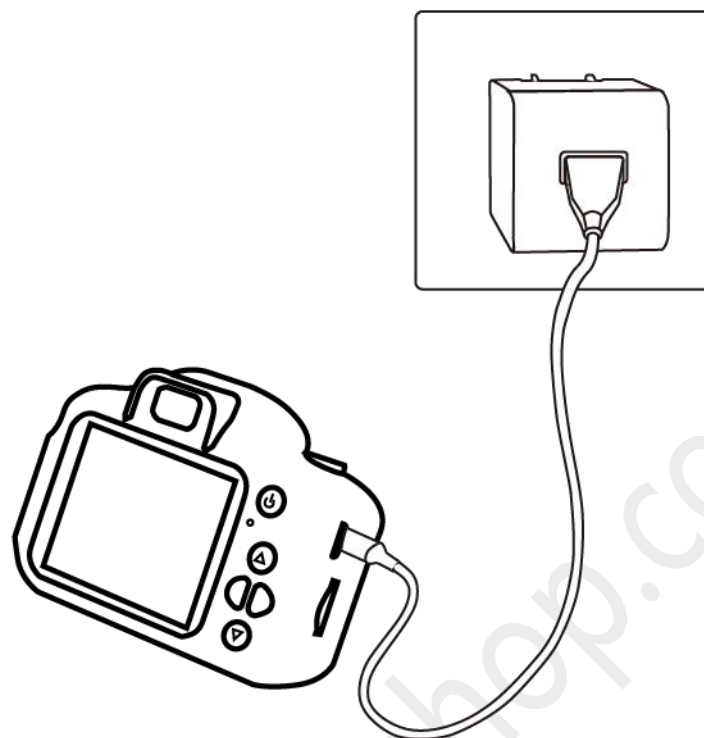


8.3 Pressione o botão “avançar” ou “retroceder” para navegar por fotos e arquivos de vídeo.



IX. Recarrega

Conecte esta câmera a uma tomada externa com o cabo USB e o carregador USB DC5V 1A para iniciar o carregamento.



Notas: a bateria pode ser totalmente carregada em 40 minutos, você pode verificar o status de carregamento pressionando o botão "ligar/desligar".